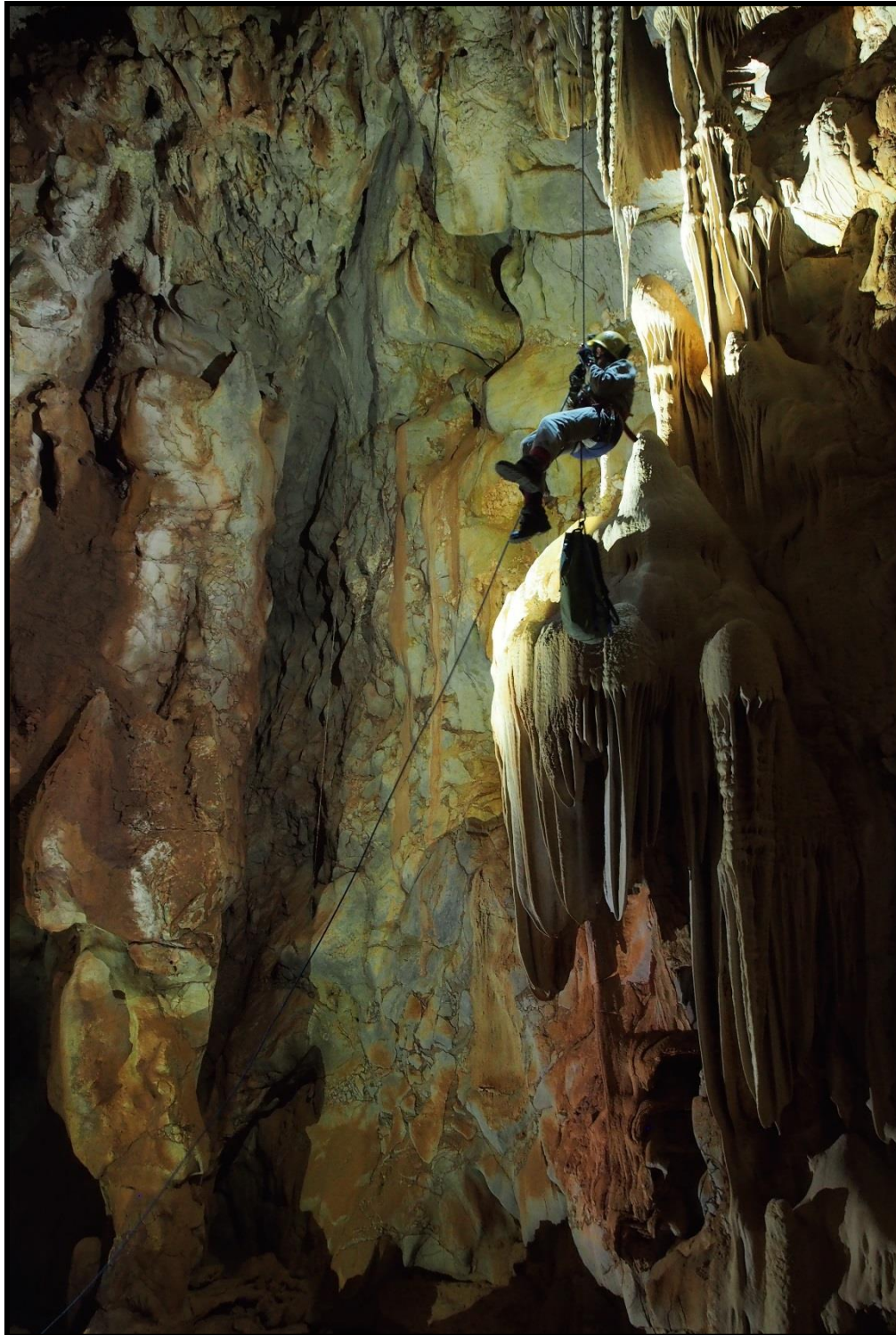


Chillagoe Caving Club

Annual Report

2017





DRAFT

The Chillagoe Caving Club was formed in Chillagoe at an inaugural meeting on 23rd April, 1973 with 16 persons present. The intention of forming the Club was to bring together the active cavers already in the area to enable them to share their knowledge, expertise and equipment, and to foster caving as a sport and a science, particularly in the Chillagoe area.

The Club became an Associate of the Australian Speleological Federation not long after the Club was formed, and voted to become a Corporate Member at the Annual Meeting in 1995. The Club was incorporated under the Queensland Associations Incorporation Act of 1981.

Full Membership of the Club stands at 43 with an additional 52 Novice 'Introductory' Members as at the end of March, 2017. The Club has become well recognized by Australian and overseas cavers and scientists as an invaluable contact in relation to Chillagoe and the surrounding areas.

The Club has an established Clubhouse in Chillagoe for the accommodation of members caving in the area.

Chillagoe Caving Club
PO Box 92, CAIRNS QLD 4870. AUSTRALIA
ABN 52 614 187 726

2016 – 2017 MANAGEMENT COMMITTEE	CONTENTS	PAGE
Patron Tom Gilmore	Minutes of the 2016 Annual General Meeting	2
President Paul Osborne	Presidents Report	11
Secretary Winfried Wiess	Treasurers Report	12
Treasurer Peter Bannink	Camping and Membership Fees 2016/2017	12
OTHER OFFICE BEARERS	Survey & Record Keepers Report	13
Survey and Records Keeper Peter Bannink	Building and Maintenance Report	13
Tagging Officer Van Christensen	Environment & Conservation Report	13
Tackle Keeper Van Christensen	Financial Report	14
Safety and Training Officer Max Emeny	Trip Leader Certification	16
Building and Maintenance Coordinator Alan Cummins	TRIP REPORTS	
ASF/ACKMA and Membership Coordinator Peter Bannink	New Southlander	17
Webmaster Winfried Weiss	March/April Caving	18
Photo Librarian Peter Bannink	2016 AGM Weekend	19
Librarian Sue Jenkins	Broken River 2016	20
Environmental Conservation Officer Peter Bannink	Broken River Rescue Exercise	21
Training Coordinator Paul Osborne	Broken River Paleo Report	23
	Chillagoe Ticks	24
	Currajong Hideout	25
	Membership List 2016/2017	26
	Clubhouse Protocol	27
	Front Cover Photo Sue Jenkins descending a 32m abseil into a large formation chamber © W.Weiss 2016	
	Back Cover Photo Tower Grike (Ryan Imperial Tower, Chillagoe) © P.Bannink 2016	
	Editor: P.Bannink	

MINUTES OF THE 2016 ANNUAL GENERAL MEETING 30th April 2016.

1. OPENING

The meeting was opened at 19:00hrs. by President, Paul Osborne

2. PRESENT

Paul Osborne, Peter Bannink, Kimberlee Bernays, Alan & Chrissie Cummins Van Christensen, Bruce Dane, Grant Polomka and Dianne Vale, Graham Murray, Ebony Murray, Sue Jenkins,. Keith Offer, Mark & Catherine Beattie, Daniel Mitchell, Winfried Weiss, David Cummins, Wendy Cummins, Steven Morgan and Kevin Smith. (21 Members)

The President announced that a Quorum was present at the meeting. Twelve financial members and life members were required

3. APOLOGIES to make the meeting duly constitutional.

Max Emeny, Rob & Jonathan Ham, Paco Murray, Tom Gilmore, Phil Harrison, Elwing Mitchell, Belinda Bannink, Jeff Cotter, Peter English, Greg & Doris Gurnier, Berend Akkerman, Barry Neale and Jamie Ellacott

4. MINUTES

Minutes of 2015 Annual General Meeting held on the 2nd of May 2015 were read by Paul Osborne and Peter Bannink. Alan Cummins moved that the minutes be accepted (seconded by Graham Murray)

5. Business arising from the MINUTES

- None

6. ANNUAL REPORTS

Additions to the President's Report

- Paul read his existing report with no additions.

Additions to the Treasurer's Report:

- Peter highlighted that over the last two years expenditure has been about \$2,000 greater than income. This is due to slightly less revenue gained in camping and membership and the large expenses on club house maintenance. A \$450 water bill due to water leaks is unfortunate, and hopefully the new water mains pipe will resolve this problem. Expected revenue seems to be better at the start of this year with a large influx of new members, so we should be able to cover costs till 2017.

Additions to the Building and Maintenance Officer's Report

- The mains water pipe was replaced by Peter and Paul, The new water tank has been installed and the grey water pump at the new amenities block has been fixed. The noisy fridge has been moved to the BBQ shed.

Additions to the Survey & Records Report:

- No additions

Tagging Report:

- Three new cave entrances have been tagged in Chillagoe.

Tackle Keeper's Report:

- None

Website

- The club has been offered a free upgrade to the website from Kim Straatemeier (the web-master) of Straat Design, however this has been delayed due to work he has just taken on. The executive asked for comments on the current website and these were conveyed to the web-master.

Librarian's Report

- Peter high-lighted that the current librarian has not renewed his membership. Currently the Library is with Miriam Robertson. She will be contacted and the library will be transferred to the newly elected librarian at the earliest date of retrieval.

Photo Librarian

- All photo's have been backed up on a second backup disk and the data is currently with Peter Bannink.

6. Cancellation of Membership

The management committee brought to the attention of present members that a club member has had his membership cancelled due to unacceptable conduct in his communications with one of the members of the executive. After seeking advice in dealing with this situation from past management committee members, the management committee (the committee member concerned recusing himself) wrote and asked for an written apology. A letter of response was received and an apology was not fourth-coming. The executive had no option but to terminate his membership. In the ASF Code of Ethics it is clear that disputes between members must be conducted in a restrained and responsible manor. The club cannot afford such division between members in the club. This is an unfortunate situation but the executive feel they have acted in the best interests of the club to resolve this situation.

7. MOTION

A motion was moved by Sue Jenkins that the club ratify the management executive's actions for the year. Keith Offer seconded this motion and the meeting carried the motion unanimously.

8. EINSTEIN AWARD

Max was nominated by **Sue**. Max did an abseil into Ryan Imperial and left his pack behind at the top of the pitch, none of the beginners thought to bring it to his attention.

Paul was nominated by **Winfried** for leading the team up the wrong valley in today's caving adventures. In his defence Paul highlighted that they were only 30m from the designated cave entrance and not lost. (O votes). Editors note: This was nothing on Van and Peters adventures in September. Together they failed to find Technicolour Pot after 1 hour of searching, having forgotten to take a map or tag number reference guide!

Caretaker Carol was nominated by Graham Murray for pulling through after leaving her position as caretaker due to ill health.

Van was nominated by Bones for cleaning drains in thongs, he slipped and luckily was on belay (all votes used up).

Deanne was nominated by Sue for leaving her helmet behind in the car (lucky a spare was available to use).

Max Emney was awarded the award with a total of 15 votes, caretaker Carol 3 votes

9. ELECTION OF OFFICE BEARERS

Paul Osborne declared all positions vacant at 8:20 pm and asked Alan Cummins to chair the meeting.

President: Winfried was nominated by **Paul Osborne**, seconded by **Van Christenson**. .

Paul was nominated by **Winfried Weiss**, seconded by **Sue Jenkins**.

Voting: **Paul** (14 votes): **Winfried** (11 votes). **Paul** accepted the nomination.

Secretary: Winfried as nominated by **Bruce Dane**, seconded by **Deanne Vale**

Van as nominated by **Graham Murray**, seconded **Kimberly Bernays**,

Voting: **Winfried** (15 Votes): **Van** (8 votes), **Winfried** accepted the nomination.

Treasurer: Peter Bannink was nominated by **Grant Polomka**, seconded by **Winfried Weiss**.

Peter accepted the nomination and was re-elected unopposed.

Paul resumed the chair of the meeting for election of other office bearers and the meeting continued.

Other Office Bearers: Peter moved that only those office holders which wished to renounce their positions would be open for re-election, other current positions holders remain unchanged. (Seconded by Sue Jenkins) Motion carried by all present.

Survey & Records Keeper - Peter Bannink (Position carried over)

Tagging Officer - Van Christensen (Position carried over)

Tackle Keeper - Van Christensen (Position carried over)

Safety Co-ordinator - Max was nominated by Paul, seconded by Sue. (16 votes, none opposing)

– Max accepted position via previous discussions with Paul

Training Co-ordinator - Max was nominated by Paul, seconded by Sue. (18 votes none opposing) – Max accepted via previous discussions with Paul.

Building & Maintenance Co-ordinator - Alan Cummins (Position carried over)

Membership Co-ordinator (encompassing ASF/ACKMA co-ordinator) - Position carried over

Webmaster - Winfried Weiss (Position carried over)

Photo Librarian - Peter Bannink (Position carried over)

Librarian - **Sue Jenkins** was nominated by **Paul**, seconded by **Deanne**. (16 votes)

Environmental Conservation Officer - Peter Bannink (Position carried over)

Paul discussed if there was still a need for the elected positions of auditor and lawyer. The consensus is that if needed the club will seek the services of professionals in these area's.

Winfried moved to write to Robin Smith and Kevin Ridgeway and thank them for their help and many years of service to the club.

10. GENERAL BUSINESS

10.1 Paul's Life Membership -

- Winfried spoke in favour of Paul being awarded Life Membership
- Vote (26 votes in favour (including proxy votes), non opposed)

10.2 Introduction of SRT Guide and trip leader certification

Motion 1

The club revives the procedure as required by the club rules in providing a written advice to the MC to record and define any club trips using the form as attached.

Proposed Paul Osborne : Seconded Max Emeny

Explanation: Club trip records are needed , important for club as the management committee (MC) needs to know what club trip are where they are and who is on them. Queensland Parks & Wildlife requires us to define club trip and non-club trip and fill in club trip form.

Discussion: **Winfried Weiss** highlighted that records are necessary, it is the first thing a lawyer will ask in an enquiry where clarification of whether it is a club trip or not. **Steven Morgan** explained that for our ASF Insurance only the club is covered not member to member and that our

insurance is primarily aimed as indemnifying the landholder. This only applies to a club activity which is sanctioned by the management committee

Steven Morgan indicated that it is a good idea as there is then clarity about it being a club trip, but the process is rather impractical on a weekend of hyperactivity. **Paul Osborne** indicated that it is intended for non-club weekends, such as a non-advertised club trip (ie not in the newsletter), it can cover this. **Paul Osborne** also said that the club needs concise records of club caving in the area. There needs to be an efficient system of management for this. National Parks needs to know (or clarify) which trips in Chillagoe are by the club and which are not. **Paul Osborne** explained that current trip leaders caving outside the club are not covered by ASF insurance and the trips they lead are dependent on any insurance the organisation they volunteer/work for may hold (be it an adventure business, club, group or school), both for landholder and individual insurance.

Amendment: Winfried

This procedure to be reviewed as necessary by the management committee

Voting: (17 votes in favour, non opposed)

Vote on the amended proposal

Voting: (17 votes in favour, non opposed), the amended motion is accepted.

Motion 2

The Club adopts the draft document outlining the SRT training levels as attached.

Proposed **Max Emeny** : Seconded **Paul Osborne**

Explanation: **Max Emeny** has been looking into doing SRT training and has found that currently no guidelines exist, so he has written the document. It is not meant to be a hard and fast document. Last year there was discussion of grading caves before the 2017 conference. This led to the finding that the whole process is subjective. Max has attempted to align a cavers skill level to a level of difficulty of negotiating a cave (or cave route). The document would only apply to club activities and is meant to guide a caver through SRT training, skill levels, so someone can progress with the gradings.

Discussion: **Alan Cummins** mentioned that there was a current system in place and this was held in the club archived. **Peter Bannink** explained that no such document has currently been found in the few records handed on to the management committee in 2011.

Steven Morgan indicated that this is a very useful guideline but is this independent of Trip Leader assessment and only for the Management Committee to record in a database.

Winfried Weiss commented that the document is a good skill list and a guideline for members to gauge their skill level. **Alan Cummins** is concerned that the Management Committee will put a time limit to Trip Leader appointment. **Winfried Weiss** commented that a mechanism to update skills is evident on nearly every profession and why should an indefinite Trip Leader appointment apply for the club. How can the management committee know if the Trip Leader has retained his skill level over the years if he/she is not caving with the club.

Daniel Mitchell has reservations about the document having restrictions of having to do club trip to retain trip leader assessment. **Winfried Weiss** highlighted that a commitment to contribute to a club trip to share skills once or twice a year should not be too hard. **Peter Bannink** highlighted that some Trip Leaders are not caving with the club, some have not caved for the last five years. Caving skills of these very experienced members are not being passed on to other club members. **Steven Morgan** highlighted that Section 6 of the document was the cause of much of the disagreement in the motion and proposed an amendment to the document

Steven Morgan proposed an amendment to the document (Seconded Daniel Mitchell)

Section 6 dealing with Level 6 be excluded from the document.

Voting: (20 votes for motion, 6 votes against) – motion was carried.

Full motion with amended document (**without section 6**).

Voting (18 votes for motion; 1 vote against motion; 1 vote abstain Alan) – motion was carried.

Motion 3

The Club adopts the draft document (V2.3) outlining the requirements for Trip Leaders as attached.

Proposed by **Max Emeny** : Seconded **Paul Osborne**.

Explanation: The above document is an adjustment to current process of appointing Trip Leaders. Max and Paul want to add one level in the appointment of trip leaders in the club. The current 'active' trip leaders (6) are under pressure to take large numbers of introductory cavers caving at club caving events. There is no real change from the old system however this system adds an extra basic trip leader level for very easy caves. Current horizontal trip leaders would have been assessed to level 2. The grading system would work with the grading of set club trip routes through the caves. The document also contained as outline in relation to trip leader certification and there was much general discussion about the conditions for revalidation of Trip Leader Certification. A large number of current Trip Leaders are not happy with revalidation and that the Management Committee can hold sway over trip leader certification. It was argued that this document should be split in relation to the various issues.

Voting: (12 votes for motion, 14 against motion) - **Motion is lost**

Motion 4

Steven Morgan put forward the motion (Seconded: **Paul Osborne**) that: The present members express to the executive that we support a review of trip leader qualification so that trip leaders are not trip leaders in perpetuity.

Voting: (22 votes for motion, Non against) – Motion is carried.

Motion 5

Winfried Weiss put forward the motion (Seconded **Sue Jenkins**) that:

The draft document (Trip Leaders) be reviewed with the view to modifying the final document as a club policy, The review to be via written submissions from all current trip leaders with the view that the executive to take to the club leaders views into account.

Voting: (22 votes for motion, None against) – Motion is carried.

Motion 6

Winfried Weiss put forward the motion (Seconded **Graham Murray**) that:

That the executive have the power to buy a gift and draft a document to award **Carol Davies** for her many years of her services as caretaker at the clubhouse.

Voting: (23 votes for motion, None against) – Motion is carried.

No further business was raised.

Paul Osborne gave thanks to all members who attended the AGM. **Paul Osborne declared the meeting closed at 22:22hrs**

(Motion 2 Document) Draft SRT (Single Rope Technique) Guide. V3.2

Preamble

CCC has welcomed many new members in recent years and many are keen to participate in vertical caving using SRT. This guide is for both new people to SRT and experienced trip leaders. It will help new cavers to know how far they want to take SRT and for Trip leaders to be able to design SRT trips suitable for the skill level of cavers.

Club SRT Equipment is available through a Current SRT Trip Leader for hire. The equipment is made available to Novice/introductory members who should aim to purchase their own gear ASAP if they

intend to become full members. Having your own gear means not so much adjusting and one can practice at home.

The only pass/fail mark that is relevant is safety, we cannot compromise on this. It is better for a Trip leader to prevent a caver going down a rope than to let them go down if they are not at a skill level relevant. Rope rescue is extremely difficult.

Just like SRT itself this document will be a work in progress. The current SRT trip leaders and newer cavers will help to refine it for future participants.

SRT is a popular aspect of caving. This guide is intended to give all cavers wishing to explore SRT a known level of competency. The goal of caving as with any sport is enjoyment. If you decide you will only ever enjoy a particular level of SRT then that is great, that is what levels are for. It is done with all extreme sports. Our age, physical ability and just plain common sense help us set our own level where we enjoy what we are doing. It is acceptable to push your boundary's and you may just find you can do more than you think. But if you just jump right over your boundary's it can end in tears. When you are totally comfortable with one level then you can look at moving up.

SRT is a proactive sport rather than a reactive sport. By reactive I mean sports like white Water Kayaking or Skydiving where you prepare for then commit to the moment and then react to external forces for the duration. By proactive I mean it can be done methodically and at a controlled pace. Rigging and gear can be checked and double checked and you can generally stop any time to sort things out. Gear and rigging is strong and tested. This makes it very safe.

The biggest variable and the potentially dangerous part of SRT is the person. It is our choice of suitable equipment, level of fitness, skill level and our mental ability to handle a given situation, which can lead to a dangerous event. Once on SRT it is extremely hard for someone to assist you. At Chillagoe the biggest factor is heat. If you cave in southern Australia or New Zealand where cold will be your biggest factor. There will be times when things just aren't going right. Your gear may get jammed, you may have to change some rigging, or add some rope protection. You can find yourself sitting in that harness for an extended period, and the fun has turned into a chore. You are hot or cold, tired and hungry but you just need to deal with it. A caver must know their skill level and keep their training up to that skill level, so hard challenging events will be rewarding.

Communications. I found a wide range of standard practice for this so have decided to put it this way. Confirm your communications with the group. Keep communication for SRT simple. SRT generally uses “**On Rope**” when you are using the rope, “**Off Rope**” when you are finished and clear. For belaying the person who is getting belayed needs to ensure they communicate that they are attached to the rope and that the person who is belaying them is ready to do so. One critical universal communication is the single word “**Below**” this means something is falling. If you hear this do not look up, take cover. It may be a small rock or a large boulder.

All cavers can benefit from the training modules here <https://training.gov.au/Training/Details/SISSS00029> Those wishing to attain level 4 and 5 competency will read and study all the module info and continually practice and work on improving their gear set up and skill set.

Note: A safety will be in place until a descender has been loaded and caver is comfortable it is rigged correctly.

Level 1 Cave: Single pitch, easy get on and off where instructor can help to ensure caver has gear on correctly and ensures safety. For descent must be bottom belayed. Ascend to a maximum of 10 meters.

Level 1 Caver: A competent **Level 1** caver can happily descend and ascend with assistance at the top and bottom of the pitch. They find it enjoyable to do not frightening to do.

Level 1 Skills list.

Level 1 is purely and introductory level. It is to give cavers an experience in SRT. To move from level one the caver must be comfortable and happy on rope and wanting to learn more.

Under supervision

- Be able to fit harness
- Understand the mechanics of the components
- Get on and off rope or ladder
- Descend and ascend rope or ladder
- Use correct communication.

Level 2 Cave: Has simple re-belays and re-directs. Verbal aid is available from others. Passage may be daylight.

Level 2 caver: Has practiced in a training situation re-belays, re-directs and up/down change over and applied these in a controlled cave situation. They are happy to stop at any time on rope and change over or tie off and do a rope swing.

Level 2 Skills List

If you pass the level two skills test you are showing that you have a good overall grasp of SRT and you will be able to explore more caves on SRT, when with SRT trip leaders.

Carry out the following tasks under observation but without correction. The cave “Keefs Back Door” is suitable for this assessment.

- Put rig on.
- Attach for descent following safety guidelines. Safety lines must be used where needed and until descender is loaded and deemed to be rigged correctly.
- Caver indicates they are “On Rope” and ready to descend.
- During descent caver stops on command from observer and locks off descender.
- Performs small rope swing or lunge to indicate they are happy on rope.
- Resumes descent to floor, does not stand on rope.
- Disconnect from rope and moves to safe area, then indicates “Off Rope”
- Attach for ascent
- Ascend 10 meters with a smooth action while controlling rope slack
- Disconnect at top following safety guidelines. Safety must be attached until clear of vertical area.
- Carry out a simple re-belay pass
- Carry out a simple re-direct pass.

Level 3 Cave: A known with cave multi pitch re-belays re-directs, the caver has limited verbal assistance available from other cavers.

Level 3 caver: Has shown they can put their rig together, eg rig is dismantled and handed to caver in bits, caver can confidently put rig together. Can change over up/down and negotiate re-belays and re-directs in dark with no assistance. This should be performed late in the day when caver is tired.

Level 3 Skills list

If you pass a **Level 3** skills test it is showing that you have a passion for SRT. You will have studied and practiced the skills. You will be able to explore even more complex caves on SRT when with a SRT trip leader. You will have your own gear and have it set up for you and your own pack that has your days water, food and spares in it. This is a great level to be at for Chillagoe.

Carry out the following tasks under observation but without correction. The skills test must be done late in the day and after a day’s caving, in a totally dark cave, with only the cavers own torch on. The caver must show they can do this comfortably and not complete it under duress.

- Caver is handed their dismantled rig in a bag, caver puts rig together ready to use
- Knowing and being familiar with common knots.
- Attach for and ascend
- Negotiate a free hang re-belays

- Re-direct
- Change over to descender
- Pass back through re-belays and re-direct
- Before touching down change to ascending and pass up through re-belays and re-direct again
- Change back to descender and return to ground.
- Knot crossing

Level 4 Cave: Unknown Caves with difficult multi pitches, re-belays and re-directs, the caver limited assistance available from other cavers.

Level 4 caver: If you pass **Level 4** it shows you have spent many hours both on rope in caves and practicing. You will have decided that SRT is for you and taken it upon yourself to upskill. You will be learning from your peers in hands on situations and will be judged by many peers on your caving SRT ability over many trips and situations. While SRT is fairly basic it is still evolving and you will keep up with and be part of that evolution. You will be able to rig caves naturally and by bolting.

Level 4 Skills list

Under supervision

- Knowing and being familiar with a wide range of knots
- Rigging and de-rigging SRT and ladder pitches efficiently and safely
- Rigging and using a belay
- Rig an entry drop with emphasis on safety and ease of getting on and off rope
- Rigging a re-direct, re-belay and free-hanging re-belay
- Rigging a pull through trip

Level 5 Cave: A complex cave where there are multiple pitches of varying lengths and complexities where communication may be difficult.

Level 5 caver.

SRT Trip Leader

organise and lead trips and train others in SRT.

Level 5 Skills List

Unassisted

- Must be self-sufficient and able to handle any situation. This level is achieved over many SRT trips where caver has shown they have the skills knowledge and attitude to handle any situation without assistance. Caver should be familiar with rigging and rope protection techniques.
- Show leadership skills and safety monitoring of others in the party
- Solve complex rigging and gear issues.
- Demonstrate a thorough knowledge of natural rigging and bolting techniques.
- Must be able to rig and de-rig caves safely and efficiently.
- Be able to assess lesser experienced cavers at their particular level.
- Evaluate a vertical caving emergency and indicate a range of strategies for dealing with it, develop a plan of action. Indicate a range of rescue techniques

Level 5 is a leader, trainer. You will have shown to your peers that you can

Level 6: (Motion 2 : Section 6 excluded from document)

Trainer/Assessor Horizontal and Ladder

A highly experienced caver in leading horizontal and basic laddering and belay techniques, level appointed by the Management Committee at each AGM (not a perpetual appointment) for the purpose of assessing skill levels of cavers applying for Trip Leader Horizontal/Ladder.

Assessor SRT

A highly experienced SRT skilled caver appointed by the Management Committee at each AGM (not a perpetual appointment) for the purpose of assessing the skill levels of cavers applying for Level 5 Trip Leader.

(Motion 3 Document) Caving Skill – Trip Leader DRAFT V2.3

Application and training

Applicant to complete Trip Leader (TL) application form available on CCC website

Applicant to hold current first aid certificate

Trade route with existing Trip Leader direct supervision.

May include belays and ladder.

Non-exhaustive task checklist to be used on all caving trips and Trip Leader assessments

- ☐ Group and cave is selected
- ☐ Communicate appropriate information on trip objective, gear required and like hazards to group.
- ☐ Trip info is on the clubhouse board
- ☐ Appoint call-out person and procedure
- ☐ Communicate to group ethics of caving to any new cavers
- ☐ Have appropriate gear for cave selected
- ☐ Navigate to a cave and demonstrate movement safely and efficiently through the cave
- ☐ Identify hazards commonly present and show strategies for dealing with them considering the skills of the group.
- ☐ Be able to identify fragile areas and show techniques for negotiating them.
- ☐ Manage the group for an enjoyable caving experience taking into consideration the skills of the group.
- ☐ Navigate back to the car, return to the clubhouse, report to call-out person and remove trip info from the Board.

Trip leader Level 1 (L1) Horizontal - Known Cave; Trade route; No SRT ; No ladder; No safety belay required.

It is envisaged that level one will give a club member a level of certification as a trip leader to satisfy NP and ASF. It is aimed at a known basic cave such as Carpentaria, Macropedes, Surprise Packet, Spring. Assessed on above task checklist by trainer assessor as competent on specific cave routes.

Level one trip leader gets assessed on each different cave route they wish to apply for.

- Recommended to Club Management Committee by L4 Trainer/Assessor
- Approved by Club Management Committee for base L1 certification, specific cave endorsements approved by L4 Assessor and recorded in Trip Leaders Log.

Trip Leader Level 2 (L2) - Ladder and Belay, No SRT – No SRT; Any cave; Ladder and safety belay.

- Be assessed as competent in L1 skills plus
- Show sound knowledge of when ladders or safety belay is required depending on the group skill set
- Demonstrate sound knowledge of rigging for and use of ladders
- Demonstrate a sound knowledge of safety belaying techniques
- Be assessed by a L4 Assessor on three trade route caves requiring the use of ladders and belays.
- Recommended to Club Management Committee by L4 Trainer/Assessor
- Approved by Club Management Committee

Trip leader Level 3 (L3) - Any cave SRT

- Trip Leader Level one and two skills plus level 5 SRT as per SRT guide

Trip leader Level 4 (L4) – Trainer/Assessor - for designated levels of trip leader **L1, L2 or L3**
Requirements

- Application
- Current Trip leader
- Be assessed by two Trainer/Assessors as competent in becoming a Trainer/Assessor in the level applied for.
- Recommended to Club Management Committee
- Approved by Club Management Committee

Revalidation

1. Revalidation of Trip Leader Certification is available to current CCC Club members
2. Trip Leader certification is valid for a membership year and is revalidated upon application at the AGM subject to the Trip Leader having led three club trips during the year.
3. The Management Committee may provide exemption from requirement 2 in extenuating circumstances.

~~~~~

**PRESIDENT’S REPORT 2017**

The past year has been the most exciting for quite a while. Membership grew significantly, we gained a grant for and purchased new SRT gear and The IUS Pre and Post Conference trips have filled to capacity with many highly placed and accredited international visitors descending on us in July and August. The networking opportunities this event will provide will really put us on the map for other visiting cavers as well as opening up international caving opportunities for our members.

We now have a new upgraded website which the MC is able to administer and the Club Public Facebook Page links directly to the website for events. Observations of website traffic and email enquiries point to a further increase in new membership for this year.

The challenges facing us this year are to bring our governance into line with current standards to provide legal protection, clear policy, training of trip leaders, and implementation of a succession plan to sustain the club into the future.

We have recognised that there are many of our more experienced trip leaders that are an invaluable source of history, advice and moderation that have moved on in life and are no longer able to provide their trip leading skills on the same frequency as they once did. The rise in membership has placed considerable workload on the trip leader resources available. We need to look at qualifying the newer, competent members to step up to these positions during this year and take a more active role in the management of the club.

In the past five years the club has had solid management that has achieved most of the goals set out in the draft five year plan and put the club on a solid financial footing. The management tasks have become steadily more complicated and onerous in keeping pace with the standards required of sporting clubs such as ours in today’s business climate. The risk we face is losing one of the key management people with no-one trained up to replace them.

I propose that we introduce two non-executive new positions – that of Vice President and Vice Treasurer/Secretary. The constitution does not preclude this and the positions could be used to mentor more youthful members into these important roles thereby increasing the management knowledge within the club. The incumbent position holders could then step down into the vice roles once the transition period passed. I envision that this would be a staged process.

Accountability and records have become an increasingly important step to risk minimisation. The club now has a significant asset to protect and this task has fallen to the management committee. We are in the

process of reviewing our policies and procedures to ensure best practice and a clear demarcation between club and individual responsibilities (clear up the grey areas and messy bits).

An example of this is the ASF drawing a clear line to determine a club trip that is covered by the ASF insurance. Another example is the requirements of the National Parks Permit. The club has enjoyed a relaxed attitude to all this in the past but all members should be aware of the club rules and policies to ensure they are doing the right thing by the club and conduct any caving activities in an accountable manner.

Finally, I have enjoyed being your president over the past year and thank you for your support. With all the current projects like the IUS trips and future proofing the club, I would like your support for one more year, however I do give notice that that will be my last year as president as I believe I'm up for a change in my life and it's time for some new blood in the position.

*Paul Osborne* (President) (April 2017)

### **TREASURERS REPORT 2017**

This year has seen a steady increase in income over the year with the large number of novice cavers signing up to cave on club events. First it was members of the bushwalking club, then the rock climbing club, who travelled west to experience the thrills of caving. Membership and camping revenues have increased substantially providing funds for extra rigging and caving equipment. This year also saw the purchase of eight SRT kits and rope from the Queensland Government, Department of National Parks, Sports and Racing's 'Get Going Clubs' equipment Grant of \$7541. The aim was to broaden the range of caving experiences available to members and this has aim been achieved beyond our expectations.

The club has been able to spend less on repairs than on previous years freeing up funds for other purchases which are planned, a Disto X (for surveying), another 100m of 11mm rope for training, two fire hoses.

**P. Bannink (Treasurer) (April 2017)**

### **CAMPING FEES 2017/2018**

|                                           |                               |
|-------------------------------------------|-------------------------------|
| Full Members                              | \$ 6.00 per person per night  |
| Novice/ Introductory Members              | \$ 8.00 per person per night  |
| Member Students (under18 school age)      | \$ 3.00 per person per night  |
| Other ASF Member Clubs or Group Bookings: | \$ 8.00 per person per night  |
| Non Members                               | \$ 12.00 per person per night |
| Non Member Students (under18 school age)  | \$ 5.00 per person per night  |

### **Membership Fees for 2017/2018**

**13<sup>th</sup> May 2017 - 5<sup>th</sup> May 2018**

Our Constitution indicates that fees become due on 1<sup>st</sup> May each year and must be paid by June 30<sup>th</sup> of that year to ensure that insurance cover available through the ASF Insurance Policy continues after June 31<sup>st</sup> of that year. To enable the Club to function, early payment of fees is necessary and the Management Committee would appreciate your prompt payment.

Fee Structure is as follows:

- |                                                                                      |          |
|--------------------------------------------------------------------------------------|----------|
| • Single Members (including full year ASF Fee)                                       | \$98.00  |
| • Family (including full year ASF Fees of \$119)                                     | \$180.00 |
| • Family – Single Parent (including full year ASF Fees of \$85)                      | \$120.00 |
| • Student Members (membership - including full year ASF Fee of \$45)                 | \$75.00* |
| • Introductory Weekend Caver (novice membership - including 1 year ASF Fee)          | \$55.00^ |
| • Introductory Weekend Caver (student novice membership - including 1 year ASF Fees) | \$50.00^ |

- Inactive Life Members (ASF Fees only) \$19.00
- Active Life Members (ASF Fees only) \$68.00
- Single Club Members (without ASF Fees) \$30.00#

\* - Students including those attending Primary or Secondary Schools who cannot be included in a family membership.

^ - **As of January 2015 the ASF introduced a 12 month introductory ASF fee** of \$20 , Cavers who continue membership of the ASF after this time pay the annual fee of \$43 for Students or \$68 for adults as per their fee schedule.

# - While it is intended that all active members join ASF some existing members, who are no longer active cavers, are continuing as Club Members only.

**Please note: a major component of the ASF fees is insurance which needs to be paid by all active members of the club, especially those intending to cave in National Park area's and Reserves.**

Membership Fees can be paid either by cash or cheque to the Treasurer, or direct to the Club's bank account. If paying by Internet Banking or by direct deposit please email the details to the Treasurer, Peter Bannink, preferably by **e-mail**: Peter.Bannink@dnrm.qld.gov.au or by phone (4092 6036) You must advise the Treasurer, the date of the deposit, the amount deposited, and it's purpose. It is possible for this information to be made available by your bank, please request that the detail of payee and purpose of payment be included for listing on the Club's account statement .For direct banking please deposit funds into the Club's Commonwealth Bank account at any local branch.

**Commonwealth Bank - Account number : BSB 064804 A/C 00912281.**

### **SURVEY & RECORD KEEPER'S REPORT**

This last year has seen a small amount of surveying activity in Chillagoe by Alan Pryke and Paul Osborne. Alan (SUSS) has completed a survey of Geck Cave CH13, while Paul surveyed a recent find on Currajong Tower he called Currajong Hideout (CH563). Deb Hunter completed a survey of Swiftlet Cave (BR206) at Broken River.

There has been little progress in updating the clubs survey and caving records.

P. Bannink

### **BUILDING AND MAINTENANCE REPORT**

Very little happened in 2016 after the water pipe upgrade. The cost of water leaks (from the end of last year) rose to about \$700 over two council financial periods, but no further leaks have been reported, which is good news. There has been some minor maintenance on the toilets in the amenities blocks, due to calcite building on the inlets and the purchase and installation of some mirrors by Grant & Deanne. Water inlets are now turned off between caving weekends to minimise water loss and reduce calcite build up. Alan Cummins thankfully coordinated the replacement of the grey water pump for the amenities block, which failed last year. Please report any issues to Paul or Peter.

P. Bannink

### **ENVIRONMENT & CONSERVATION REPORT**

Mining activity has commenced in the old Red Dome pit. Cavers need to be aware of these changes if you plan to visit Piano Tower, which lies right next to the mining area and the eastern tower is only 150m from the edge of the pit.

P. Bannink

## FINANCIAL REPORT

### **STATEMENT OF RECEIPTS AND EXPENDITURE FOR THE YEAR ENDED 28<sup>TH</sup> FEBRUARY, 2017**

| 2016                             |                              | 2017              | 2017             | 2017         |                     |
|----------------------------------|------------------------------|-------------------|------------------|--------------|---------------------|
|                                  |                              | <i>Membership</i> | <i>Buildings</i> | <i>Sales</i> |                     |
| <b><u>Receipts</u></b>           |                              |                   |                  |              |                     |
| 4,871.50                         | Membership Fees              | 8,148.00          |                  |              |                     |
| 20.00                            | Tackle Hire                  | 355.00            |                  |              |                     |
| 0.00                             | Mem. Gear Refund             | 1,183.75          |                  |              |                     |
| <b><u>Bank Interest</u></b>      |                              |                   |                  |              |                     |
| 0.80                             | Commonwealth                 | 1.66              |                  |              |                     |
| 0.33                             | Bendigo Bank                 | 0.18              |                  |              |                     |
| <b><u>Chillagoe Property</u></b> |                              |                   |                  |              |                     |
| 2,970.00                         | Rent Received                |                   | 3,000.00         |              |                     |
| 3,486.00                         | All Camping Fees             |                   | 4,266.00         |              |                     |
| 0.00                             | Donations Building Fund      |                   | 0.00             |              |                     |
| 441.70                           | Donations - Other            |                   | 142.00           |              |                     |
| 62.39                            | Solar Power Credit           |                   | 0.00             |              |                     |
| <b><u>Fund Raising</u></b>       |                              |                   |                  |              |                     |
| 7,417.00                         | Grant                        |                   | 0.00             |              |                     |
| <b><u>Trading</u></b>            |                              |                   |                  |              |                     |
| 60.00                            | Publications                 |                   | 25.00            |              |                     |
| 13.40                            | Postage                      |                   |                  | 0.00         |                     |
| 15.00                            | Ex - Cconference Sales       |                   |                  | 0.00         |                     |
| -----                            |                              | -----             | -----            | -----        |                     |
| 19,358.12                        |                              | 9,688.59          | 7,408.00         | 25.00        | <b>\$ 17,121.59</b> |
|                                  |                              | -----             | -----            | -----        |                     |
| <b><u>\$19,358.12</u></b>        | <b><u>Total Receipts</u></b> |                   |                  |              | <b>\$17,121.59</b>  |

| 2016                             |                       | 2017              | 2017             | 2017         |  |
|----------------------------------|-----------------------|-------------------|------------------|--------------|--|
|                                  |                       | <i>Membership</i> | <i>Buildings</i> | <i>Sales</i> |  |
| <b><u>Less Expenses</u></b>      |                       |                   |                  |              |  |
| 3,228.00                         | ASF Fees              | 4,523.00          |                  |              |  |
| 48.25                            | Incorporation Fees    | 49.95             |                  |              |  |
| 0.00                             | Stationery & Postages | 19.90             |                  |              |  |
| 115.00                           | PO Box Rental         | 121.00            |                  |              |  |
| 0.00                             | Website Expenses      | 360.00            |                  |              |  |
| 0.00                             | Bank Fee              | 21.23             |                  |              |  |
| 0.00                             | Caving Gear           | 8,715.47          |                  |              |  |
| 0.00                             | Members Gear          | 1,183.75          |                  |              |  |
| <b><u>Chillagoe Property</u></b> |                       |                   |                  |              |  |
| 594.45                           | Council Rates         |                   | 1,410.30         |              |  |
| 3,669.97                         | & Water Charges       |                   | 3,707.64         |              |  |
| 0.00                             | Property Insurance    |                   | 0.00             |              |  |
|                                  | Electricity           |                   |                  |              |  |

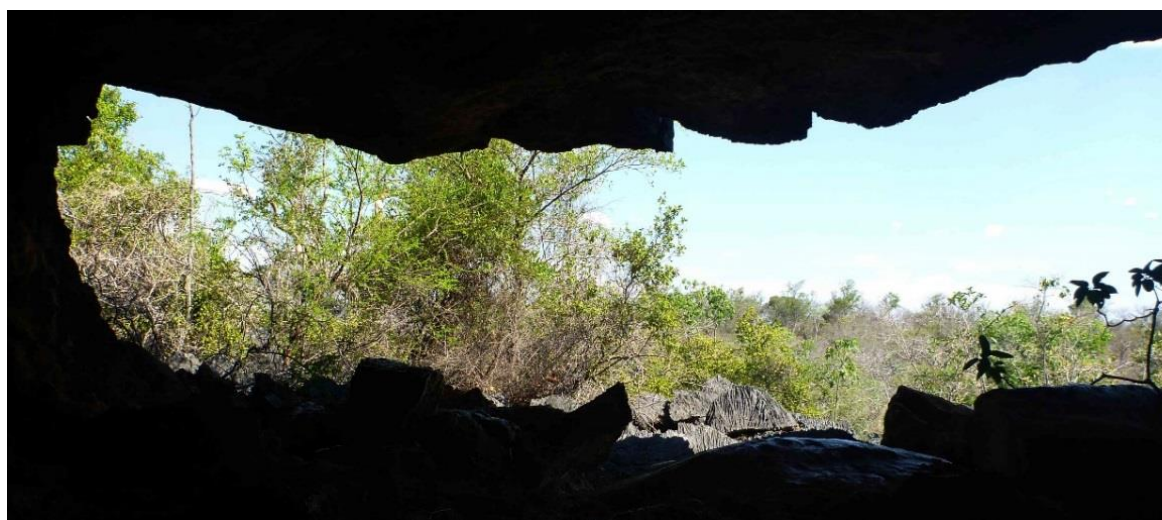
|                                      |                                                   |            |                             |
|--------------------------------------|---------------------------------------------------|------------|-----------------------------|
| 304.50                               | Workcover                                         | 200.00     |                             |
| 0.00                                 | New Graywater Pump                                | 583.00     |                             |
| 0.00                                 | Amenities Block (Mirrors)                         | 74.50      |                             |
| 1,920.00                             | Caretaker's Costs                                 | 1,920.00   |                             |
| 655.49                               | Maintenance                                       | 966.00     |                             |
| 200.00                               | New 2 <sup>nd</sup> hand Fridge                   | 0.00       |                             |
| 665.76                               | Water System Maintenance                          | 0.00       |                             |
| 1,092.69                             | New Water Tank                                    | 0.00       |                             |
|                                      | New Cash Box                                      | 17.0       |                             |
| <b><u>Sub Totals</u></b>             |                                                   | 14,994.59  | 8,878.44                    |
| <b><u>Receipts less Expenses</u></b> |                                                   | (5,305.71) | (1,470.44)                  |
| <b><u>\$12,494.11</u></b>            | <b><u>Total Expenses</u></b>                      |            | <b><u>\$23,872.74</u></b>   |
| <b><u>\$6,864.01</u></b>             | <b><u>EXCESS OF RECEIPTS OVER EXPENDITURE</u></b> |            | <b><u>(\$ 6,751.15)</u></b> |

#### CASH BOOK BALANCE

|                           |                                                            |                          |
|---------------------------|------------------------------------------------------------|--------------------------|
| 4,737.64                  | Opening Balance as at 1 <sup>st</sup> March 2016           | 11,601.65                |
| 6,864.01                  | Less: Excess of Receipts over Expenditure                  | 6,751.15                 |
| <b><u>\$11,601.65</u></b> | <b><u>TOTAL FUNDS – 28<sup>TH</sup> FEBRUARY, 2017</u></b> | <b><u>\$4,850.50</u></b> |

#### BANK RECONCILIATION

|                           |                                                           |                           |
|---------------------------|-----------------------------------------------------------|---------------------------|
| 11,300.81                 | 28 <sup>th</sup> February, 2017 Commonwealth Bank Balance | 5,307.67                  |
| 12.00                     | Add: Outstanding Deposits                                 | 0.00                      |
| 11,312.81                 |                                                           | 5,307.67                  |
| 262.82                    | Less: Outstanding Cheques                                 | 1,009.01                  |
| 11,049.99                 |                                                           | 4,298.66                  |
| 551.66                    | Add: Bendigo Bank Account                                 | 551.84                    |
| <b><u>\$11,601.65</u></b> | <b><u>TOTAL FUNDS AS ABOVE</u></b>                        | <b><u>\$ 4,850.50</u></b> |



A view out of CH491 (Dire Straits) in the central Markam Tower complex

## TRIP LEADER CERTIFICATION

At the AGM the Management Committee meeting members supported a review of trip leader qualification so that trip leaders are not trip leaders in perpetuity (**Motion 4**). After receiving many written submissions from Trip Leaders the executive sent out a letter describing changes to be proposed and adopted as club policy.

Letter to Trip Leaders 5/05/2017

### **Trip Leader Currency Requirements**

Att CCC Trip Leaders

Hi All and thanks for all the submissions.

There were some interesting points of view put across and many in support of some form of currency validation although most not in favour of the proposal in its present form.

Since the submission period closed, the Club has put into use eight sets of SRT equipment and there is a strong membership push for more SRT activity with the all SRT gear booked out each club weekend. The changes to SRT Trip Leader requirements as listed below have been generated by this activity and the new equipment.

To move forward and in an effort to find a middle ground the Management Committee at its last meeting decided on the following.

1. That no change to the present form of horizontal trip leader will take place in the immediate future. Having said that the Management Committee believes that in keeping up with industry and recreational standards, we need some record verifying currency of trip leaders as a measure of protection for the Club and Trip Leaders.
2. For SRT Trip Leaders, the SRT component of the Trip Leader certification will expire after two years should the member not apply for re-validation and have participated in SRT training with the Club on at least two occasions during that period unless an alternative arrangement is agreed with the Management Committee. Re-validation/approval by a CCC SRT Assessor will be necessary to re-validate.
3. For ALL Trip Leaders whose **membership lapses** for a period of **six months or more**, the trip leader certification will lapse and re-application for the certification will be necessary prior to acting as Trip Leader for the Club.

### **Where to next.**

I open the subject up to Trip Leaders again for suggestions as to how best to protect the member's interests in maintaining a currency record for Horizontal Trip Leaders.

The Management Committee plans to schedule at least one Rescue exercise, one Trip Leader training weekend and several SRT training exercises during the 2017 year. These will be advertised on the new website and the club FB page and will be an excellent opportunity to keep abreast of current practice.

Regards

Paul Osborne (For The Management Committee).

## TRIP REPORTS

### **New Southlander**

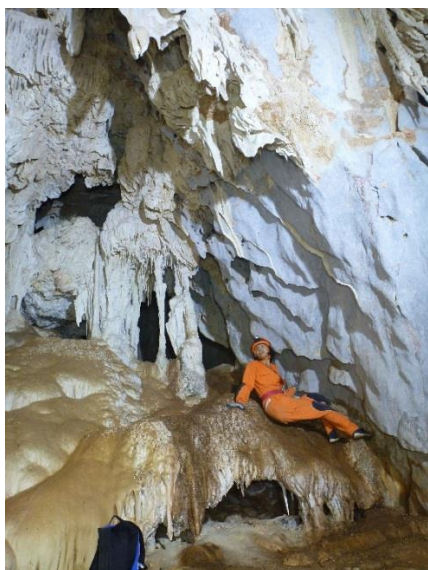
P. Bannink

A request for photo's of cave passages from the Queenslander Cave System got a small team of cavers out to the tower block in late April. Despite having not been there for about eight years, Peter looked up the locations of the most accessible system, which turned out to be New Southlander Cave. Although this cave does link into Queenslander Cave (Chillagoe's longest and largest cave), the connecting passage is hard to find and the New Southlander section is effectively an isolated system.

Peter, Emily, Robert and Goy were the first out there this season, with Robert's car wading through 2m tall weeds, on the small off-road track to the south east corner of the outcrop. While the map showed the three target entrances quite far apart, in reality all were within 30m of each other, only one did not require vertical gear to enter CH69.

The sloping entrance slot is very familiar to other caves in Chillagoe and leads down a deep sloping rift to a medium sized daylight doline. The route was quite wet and slippery after the recent down-pours in Chillagoe. Not knowing where we were going was quite thrilling, as it felt we were exploring the system for the first time.

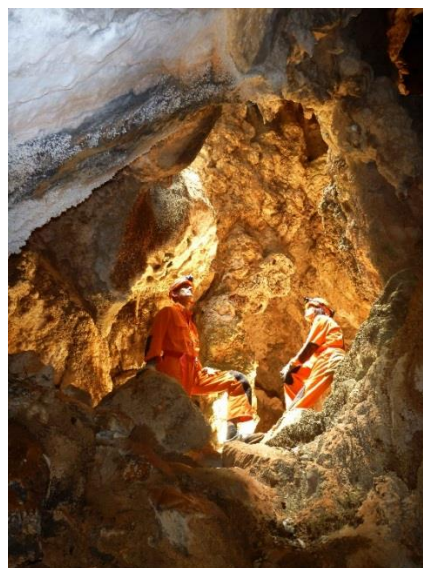
A small chamber lead off the daylight doline, where there was evidence of nesting swiftlets. The nests and eggs had been washed off the walls, and lay littering the guano pile. Robert did some minor exploration in some phreatic passages at the back of the chamber but he ended up looping back.



© P. Bannink

Goy as the scale model!

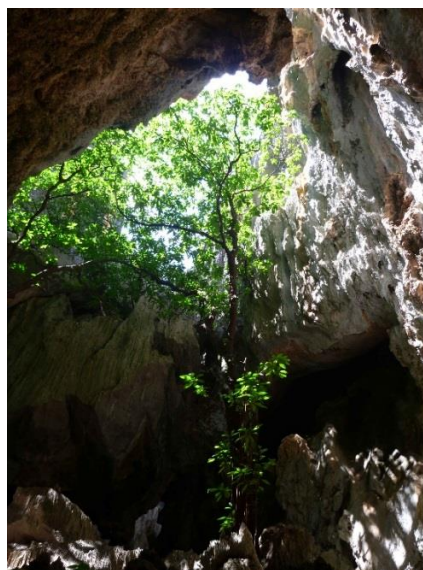
Back we all went to explore the way on, only when we were heading out did Peter remember the link, it is a small crawl just below one of the climbs down the rift. The crawl lead into a small series of formation chambers, probably the best to be seen in this area of the cave. We all spent a few moments taking photo's and enjoying the dazzling white displays.



© P. Bannink

Robert and Goy in a skylight link

It did not take long for the cave to link through to a daylight rift which descended rapidly into a large chamber filled with soil. The arches were spectacular linking into dark passage at one end and to a massive rock pile of daylight boulders at the other. We all explored this region for about an hour but could not find the link on.



© P. Bannink

A large fig tree fills the doline!

It took another 20 min to realise the way on was a climb up onto a massive boulder pile and scampering over the 'Broken Tower Block', doubling back and climbing 15m above where we had been before. Without thinking much Peter followed a route through the upper boulders and scrub to another steep descending entrance. This was reasonably exposed with smooth slippery rocks, but it got everyone down into a massive doline chamber called Broadway. Open to daylight two large open dolines combine to create an enclosed area with sheer vertical sides where only moss grows in the flat floor. At one end a rock-pile marks the final exit, which requires a steep climb and an interesting squeeze out amongst the boulders.

## March/April Caving

P. Bannink

The caving club hosted the Cairns Bushwalking club over Easter, accommodating 15 introductory caves for three days of action packed adventure.

Paul was well organised before I even got to Chillagoe on the Saturday, with five trip leaders taking trips to Haunted Cave, Spring Cave and Blue Sky. I tagged along on the new planned route through the Blue Sky/Link Up System. Only two introductory cavers took on this challenge, which involved several ladder climbs and a bit of constricted crawling.

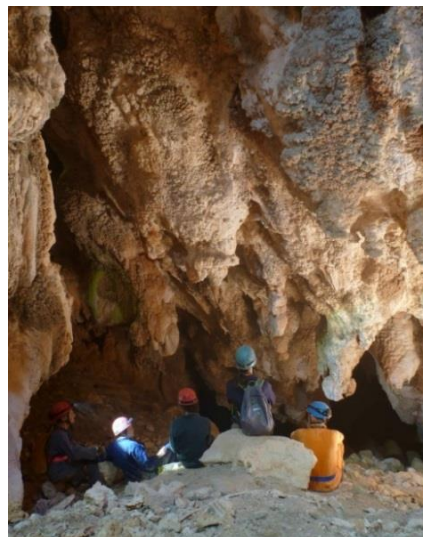


© P. Bannink

Max and Jesse at the first ladder climb

Max and Paul had rigged the climbs the day before so the route through was very streamlined. Conditions were however very hot and humid, and the rocks very slippery. It took about 4 hours to get through the system, from one side of the tower to the other.

Jesse and Belinda were hilarious and took to each vertical challenge with renewed enthusiasm despite the conditions in the cave. I for one was very happy to see the end of the day, lack of fitness and a pulled muscle, the major cause of my miseries



© P. Bannink

First rest stop after getting into Spring Cave

The April ANZAC long weekend was just as busy with Kimberlee bringing another 12 extra adventure cavers from the Cairns Region. I got to go in a trip to Spring Cave which I had only recently visited for the first time in January (with Paul). Spring Cave is really an adventure cavers paradise, being a very large horizontal maze cave with some really spectacular features. The cave was a tourist cave at the turn of the last century (1890 - 1930), when mining was booming in Chillagoe and the place to try to make your fortune!



© P. Bannink

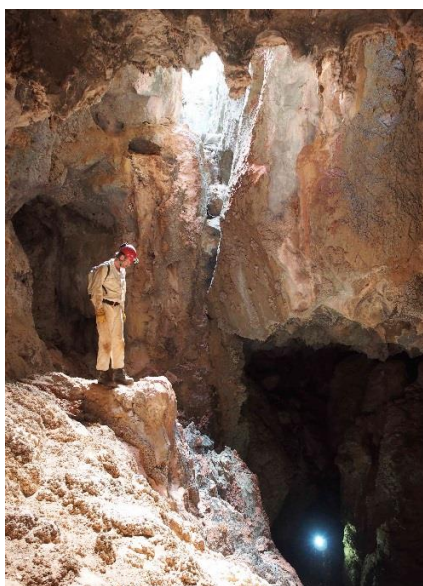
Walking up the first long rift, Spring Cave

Grant and Kimberlee were the official trip leaders even though we had quite a small group. Peter tried several new photo opportunities as the large passage and rifts were quite spectacular. On the whole this was a fantastic trip, with quite a large amount of walking and climbing through boulder piles. Paul and Grant have a set route to follow through the system, which takes about 3 hours with rest stops. There are a lot of daylight sections but the light trickles in from above creating spectacular sights as reflective light highlights features in the passages below. There are also several entrances to visit as well as the old tourist section which contains a fantastic formation area.

## 2016 AGM Weekend

P Bannink

Participation at the AGM excelled expectation this year with 16 members heading out to Chillagoe for the event. Controversial proposals slowed progress during the night but we got through it all in the end.



Steven Morgan in Rift Pothole

© W. Weiss

Surprisingly Paul and Peter were voted back into their positions with Winfried Weiss, as the new Secretary. The controversial issues surrounding Trip Leader certification have been delayed, pending membership feedback from those affected by the proposed changes. The caving however was fantastic with numerous trips being lead for those new introductory members who made it out there.

Winfried got some fantastic photo's from a rarely visited SRT cave, and I got to visit CH273 (Rolley's Choice), another cave I have never been

too. The cave was located in the 1980's, however graffiti in the cave dates back to the 1930's.



Sue lighting up the main rift in CH273

© P. Bannink

CH273 is on Pinnacle Tower and Grant had located the entrance the day before, so lead a group of four straight up to the entrance. The cave links into CH274 via an 8m ladder climb and is was our objective to explore the system as described in the caving guide book.



Pete relaxing in the CH274 entrance

© P. Bannink

The climb down was relatively easy and the entrance opens up into a wide rift leading off perpendicular to the tower. It did not take long to get to the other end, where we explored small climbs and holes looking for the elusive link. One rift was particularly squeezezy, and despite climbing up about 8m, the passage just doubled back to the rift. Grant found a very nasty squeeze following a

sink in the middle of the rift. Despite blowing air, no one was willing to slither in, and over a nasty sharp knob in the middle of the tunnel. It was heading in the right direction though.

We then began a thorough search on the sides of the rift, clambering in and out of tiny passages and between boulders that simply went no-where. Eventually Peter located a small lead through rock pile, just to the RHS of the entrance. In a small upper alcove, a narrow rift dropped away looking very promising. Grant rigged and then re-rigged the ladder, as the drop was deeper than expected.

Peter climbed down to find we had finally found the connection to CH274. A quick look around did not reveal much and it appeared to be just another dead end rift. As time had run out for our 12:30 deadline, we all left for the day. Grant and Deanne returned the next day to fully explore this section and finally found the upper section described in the guide book.

## Broken River 2016

P Osborne

20 cavers attended the 2016 Broken River Expedition, John Patterson, Deb Cade (NZ), Deb Hunter, Ken Higgins (Tas), Douglas Irvin (Sydney) & Allison Irvin, Palaeontologists, Gilbert Price, Nick Wiggins and Julian Louys (CCC), with other club members, Van Christensen, Kim Bernays, Jeff Cotter, Grant Polomka, Deanne Vale, Sue Jenkins, Dwayne Kersey and family and expedition leader, Paul Osborne.

The Tasmanians and Kiwis rolled into Townsville on the Thursday prior to the expedition and were met by Paul. Final provisioning was done and the convoy headed off to Broken River.

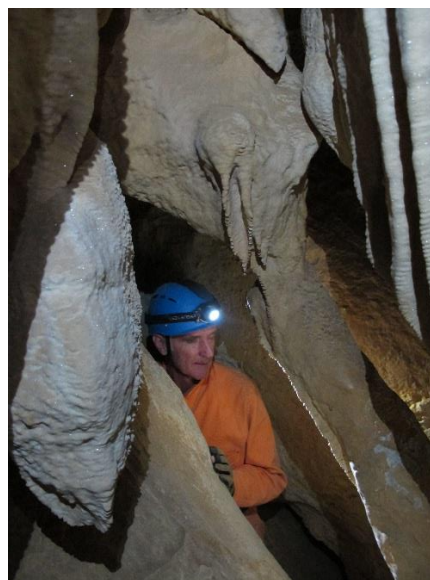


Broken River Exploration Team

Ken's VW Caddy suffered a dirty fuel problem and delayed our arrival until after dark on the Friday evening. Grant, Deanne, Van and the

Kerseys were already camped and the rest arrived over the next few days.

The first day was taken up with sorting the camp and an orientation run through Three Avenues.



© P. Osborne

Grant Polomka in Three Avenues

Sunday was spent with two teams entering the Trippers/Beehive System from both ends with the object of meeting up on a crossover. Neither team met each other, and time required all to exit via other entrances to return by the SAR Time. Trippers was left rigged for the week.

Monday saw a full through trip from Beesting entrance to exit the Trippers main entrance. Doug and the Paleo team Spent time in Geologists Find and is covered in a separate report.



Alison, Deb and Grant among the karst!

Dwayne and family departed on Tuesday morning. The rest of Tuesday was taken up by the Rescue exercise (separate report) and a very successful Tapas night where everybody created some delicious taste sensations for all to sample accompanied by suitable beverages. The highlight

of the night being the *PUDDING??*, the Paleos created from a secret recipe.

The Paleo team departed on Wednesday morning and Deb Hunter organised a trip to Millenium while apart from a firewood trip a few had a day off to enjoy the camp and surrounds.

Thursday saw a survey started in Swiftlet Cave and exploration of the cast north of Trippers. A new cave was located explored and tagged by Allison BR202 Dingo's Breakfast. Hasbeans and Meerkat Manor were also located and further exploring up the cast led to Geologists find.



Deb Cade in action!

Friday saw a start of exploration and survey of Hasbeans by Paul and Ken while Douglas lead a team up to the Karst near Robert Broom Cave.

Hasbeans was tagged by Paul, Ken and Oz on Saturday with the survey completed while Deb completed the survey of Swiftlet Cave.

Caves tagged were;

- BR201 Hasbeans
- BR202 Dingo's Breakfast
- BR203 - reserved for Meerkat Manor.
- BR204 Gagarin Cave
- BR205 Dry Cave
- BR206 Swiftlet Cave

Caves surveyed were

- Hasbeans
- Swiftlet cave.

Next Expedition;

- Survey Big Ho and Dusty Drain
- Tag and survey Meerkat Manor and Spiderpig.

## Brocken River Rescue Exercise

P. Osborne

On the 28<sup>th</sup> June 2016 13 cavers (including the casualty) participated in a cave rescue exercise organised by Trip Leader Paul Osborne.

We used the entrance to Millennium Cave for the exercise, which has a 7 metre drop where a stretcher would need to be hauled with the hauling system.

The team was divided into

- Incident Controller.
- Entry Controller
- Stretcher Team
- Haul Team
- Edge Controller and
- Safety Officer

We were hampered by a lack of available equipment as some important items were either left in the cars or back at camp but a check around the team produced sufficient equipment to effect the rescue exercise.



Setting up the Petzl Paw

The equipment to be used included the club's stretcher and the dedicated 6 to 1 hauling components kept in a separate bag to the stretcher. Ropes and pulleys were supplied by participants. A team discussion was held prior to the exercise to ascertain what the most likely injury would be and the team's first aid supplies were inventoried to assess what was available.

The briefing covered task and team assignments, general safety requirements and calls to be used. Deanne was first casualty and as she was suffering a fractured sternum from a non-caving incident,

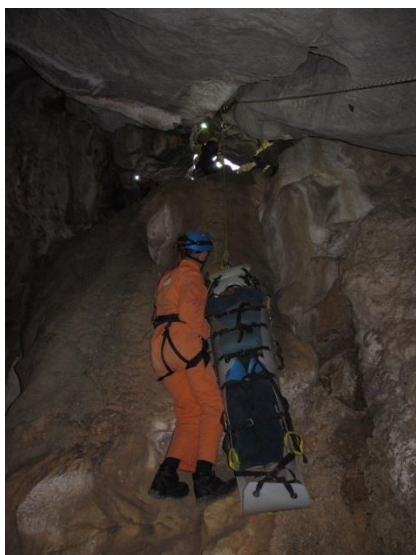
she was an obvious choice and gave valuable, positive feedback as to the comfort of the stretcher.



Team at the top of the pitch!

The set-up took about an hour and a half from the cars with  $\frac{3}{4}$  hour to get the stretcher ready to haul and 10 minutes to haul out to safety. Familiarity and regular exercises of this type would shave a lot off the times.

A safety line was set back from the edge to define the area where all persons must be clipped in to a safety line. A safety controller was appointed to oversight the overall safety of all operations and personnel.



Grant escorting the 'patient'!

An Edge Controller was appointed and was tasked with the edge set-up rigging and communications between stretcher and haul teams. Several lowering and raising exercises were carried out and teams and jobs rotated to give everybody a go at each job.

There was a clear misunderstanding of the correct use of the stretcher and its lack of complete

hauling components as was evident by the improvisations made by the stretcher team. A debrief was held the following day with the stretcher components and safety features explained by the Trip leader and hauling components since added.

John Patterson of NZ Cave SAR added the following comment; "Your setup met the three rules we use for any rope rescue system, always good to remind people of this;

- 1) The Haul and Belay must have independent anchors (ie no single anchor or component can cause a catastrophic failure)
- 2) Hands free... the rescue system would not fail if everyone let go.
- 3) System has a 10:1 safety factor. ie 100kg load (one person) loading due to force multiplication on any anchor or component should not exceed 10Kn"

The exercise highlighted many areas where we could improve as follows:

- Nominate someone to assemble all equipment necessary and available using a checklist prior to heading out to the incident site. The checklist should include items that may be available such as mobile, satellite or michie phone, EPIRB, GPS, radios, ropes/traces, water, food, bolting kit, knife and a smart-watch for monitoring the patient ongoing condition.
- Appoint a person familiar with the stretcher to lead the stretcher team.
- Appoint a person familiar with the haul kit to lead the rigging/haul team.
- Update the instruction folder with photographic descriptions of the rescue kit components and their use.
- Have hauling tapes fitted to the stretcher.
- Have the stretcher hauling components clipped onto the correct attachment points during storage.
- Include at least the haul and belay lines in the stretcher/rescue kit.
- List all included rescue items on the outside of each bag.
- Have the rescue kit colour-identified from other similar bags at the entrance.
- Ensure that the casualty is fitted with a harness and the haul or belay line is attached to them as well as the stretcher.

Other suggestions were made to include;

- Sam splints
- Compression bandages (Vacuum packed)
- Neck brace
- At least two pulleys

- Collapsible helmet. (Caving helmets with battery pack mounted on the back are not suitable)
- Checklist of additional gear to collect prior to leaving camp.
- Folder for checklists, casualty assessment forms and usage instructions.
- More padding and towels.
- Replace some of the black tapes with colour coded tubular tapes to avoid confusion on assembly.
- An entrance stationery kit to include ; notepads, Entrance log in, radio log, briefing/debriefing sheets, pens, markers, whiteboard, michie phones, sticky notes and high-vis vests.

## Brocken River Paeleo Report

D. Irvin

After lunch and setting up camp Gilbert Price (GP), Julien Louys (JL), Nick Wiggins (NW) and I (DI) left for Geologists Find (BR28). The aim was to make a very thorough search of the area where Nick found the Tasmanian Tiger jaw in 2014. We went as far as the end chamber and found some more breccia. A swiftlet nesting site with a guano pile was also found. Out by 5:10pm.



Douglas Irvin, Gilbert Price, Nick Wiggins & Julien Louys before going to BR28

© D. Irvin

Sunday June 26 (Low cloud mild temperature)

GP, JL, NW and DI went back to Geologists Find BR28. Entered at 9:15am. Good collecting in the northern terminal chamber. There is a swiftlet nesting site there too. We dumped the bags and went onto the south side but didn't get very much there at all. Out by 1:05. Lunch at camp. Then we went to Swiftlet Cave. Reasonable collecting near main intersection with the pretty false floor. A passage that leads west and ends in a hollow of yellowish clay which looked very unusual Nick collected a blue tongue skeleton. Back to camp by 4:50pm



Breccia shelf BR28

© D. Irvin

Monday 27/6.

GP, NW, JL & DI to Three Avenues Cave through Snake entrance BR181. Collected in the first big passage to the left. Mostly small stuff. A few bats *Taphozous georgianus* were seen here. The last passage to the left had a bat roost and a sample of loose material was collected. A ghost bat jaw was found in the main passage. Through the various Bum Holes to the Avenues. The first low section into the first avenue had a lot of interesting breccia. Samples were taken and then we made our way back to the car for lunch.



Kangaroo skull from Three Avenues

© D. Irvin

After lunch we collected samples near the far end of the second avenue. Another fairly loose deposit was found and sampled further to the north. Douglas went through a tight squeeze but Grant got stuck in his attempt. He saw a very fine roo skull in the roof just above his head. He found another way around and the fossil was liberated. It is the upper jaw and the back of the skull. After a bit of wandering around we made our way back out. Slip Slope Splat (BR182) was quite a challenge but yielded bags of trophy material. Out

by 5:30. Collection sites are marked on the Three Avenues map.

Tuesday 28/6 (The only cool morning)

GP, JL, NW & DI went to Tower 252 near the entrance gate. We worked along the Western side starting at the Southern end. A couple of small entrances were bypassed and the third one entered.

This cave has a lot of daylight areas and goes right through the Tower. It did not look the least bit prospective until Nick found a part of a short faced kangaroo molar. More earnest searching meant we were late getting to Millennium Cave as planned. Three assassin bugs were seen. A possible possum scat was found. We had seen possum claw marks in the adjacent cave in 2013.

At Millennium Cave others had set up a rescue exercise. I sent the paleos to do their own exploration with the aid of a map however they did not find anything of interest.

Wednesday 29/6.

The paleos packed up and left to do more collecting near Rockhampton. Deb, Deanne, Grant and I went to Swiftlet Cave (BR206) for some surveying. After some bush bashing we went in the "old" entrance which does not seem to have a tag. Surveying was slow going as this way is quite convoluted. Finally made it to the major intersection with the large pretty false floor which is a central landmark. Lunch. After lunch did some exploring. Firstly up the passage to the West that ends in an unusual hollow of yellowish clay. Then to passages that went south. I left them to do some more surveying and went out the "best" entrance. Back by 3:40



An interesting deposit in Swiftlet Cave

© D. Irvin

Thursday 30/6.

Exploring with Paul Osborne, Oz Patterson, Allison Irvin, Ken Higgins and I. A new cave Dingo's Breakfast was found and explored. Gear needed for nearby Has Bean and Merecat Manor caves.

Friday 1/7.

Deb Cade, Oz Patterson, Kimberlee Bernays, Jeff Cotter, Allison & Douglas Irvin went to the Northernmost Tower 272. A quick tour of Robert Broom Cave which seemed more cramped than ever. The GPS led us to the entrance of Gagarin Cave (BR204) found by Allison in 2012. A rope was rigged and it was a tight squeeze for her to get down. It was not very extensive. The nearby entrance to Dry Cave (BR205) was also explored, this cave was also found by Tim Moulds and Douglas Irvin in 2013.



© D. Irvin

Allison ready to descend Gargarin Cave

Saturday 2/7.

Grant, Deb and I went to Tripper's Delight Cave (BR187) to go down a rigged pitch, return and de-rig. Back by 1:45. Started packing up.

Sunday 3/7.

Allison and I did a quick trip to the Swiftlet Cave "old" entrance. This is where Deb's survey of Swiftlet Cave started from. Then it was off to Cairns after a very good week of caving. Conclusion. Gilbert was surprised how rich in fossil material the BR caves are. Much richer than Chillagoe's. This probably because the caves are lower and younger and material has not been washed out. Note, the richest fossil cave in Chillagoe is Tea Tree Cave and it is not on a Tower but really at plain level. It is possible that more exploration at BR will yield more interesting results.

Douglas Irvin (Sydney); 24/7/2016

## Chillagoe Ticks

W. Weiss

In March Winfried spied a tick crawling up the wall of a passage in Queenslander Cave. He took a great photo of it (shown below) and sent it to

Professor Stephen Barker from the Department of Parasitology at the University of Queensland.



© W. Weiss

The interesting tick seen in Queenslander Cave

Professor Baker provided a tentative identification based on the photo provided. The specimen looked like *Argas dewae* (Dewae's bat Argas), but an actual specimen would be needed to be sure.

*Argas dewae* has not been collected in Queensland before so obtaining a specimen would be worthwhile. There are also likely to be *Ixodes* sp in the bat caves too. It would be good to know the type of host (Swiftlets or which species of bats) is roosting near to where the ticks are found.

## Currajong Hideout

P Bannink

In November about twelve cavers gathered for the last weekend of club caving for 2016. On the Sunday a small group travelled out to Dire Straits (CH482) located on the southern section of the Markam Tower complex. It took a while to finally find the entrance among the tower karst and frequent rockpiles and pits. Paul got Joy and Tegan testing their rigging skills while other cavers got their SRT gear on.

The pitch was surprisingly rigged off a tiny rock projection on a massive boulder overhanging the 20m pitch (backed up of course), providing a perfect free-hang straight to the bottom. It took some time to get everyone down, and the abseil was spectacular, with beams of sunlight lighting up surrounding formation of a large chamber. A full exploration of the cave began as we broke onto groups of three to explore the different sections.

At the back of the main chamber a complex climb through a boulder pile lead to a surface entrance (CH491). Dire Straits turned out to be quite a small cave, which thoroughly entertained everyone for the morning.

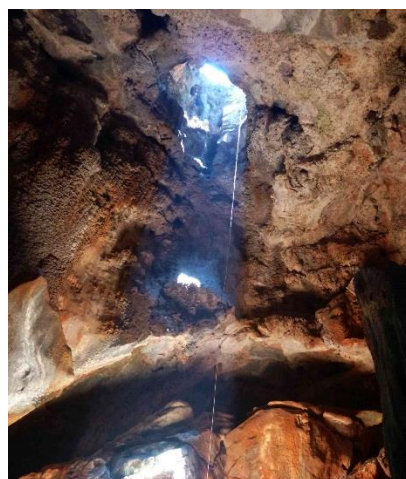
On the last day Paul planned to survey a new doline he had located the year before while working on Rescue Cave. Paul, Peter and Jason headed out to Currajong Tower to tag a few entrances in the same area.



© P.Bannink

Paul heading down after setting the re-belay!

After tagging a back entrance to Rescue Cave (CH562), Paul led us around the corner to a spectacular funnel shaped doline. The entrance took a while to rig and required a long re-belay, as the sides were funnel shaped and dangerous to access.



© P.Bannink

Looking up into the stunning circular chamber

At about 28m the abseil was fantastic dropping straight into the middle of a large chamber. Decoration was pristine, so we took care moving about the massive boulders as we surveyed and explored the area. We did not complete the survey but got the main section done. There are a few leads to follow up some time in the future.

## MEMBERSHIP LIST 2016/2017

### Executive

|                |             |          |      |
|----------------|-------------|----------|------|
| Paul Osborne   | (President) | El Arish | 1979 |
| Winfried Weiss | (Secretary) | Tolga    | 1993 |
| Peter Bannink  | (Treasurer) | Mareeba  | 2000 |

### Region Year joined

### Club Members (non caving)

|             |           |           |      |
|-------------|-----------|-----------|------|
| Les Pearson | (Life M.) | Brinsmead | 1973 |
|-------------|-----------|-----------|------|

### Club Members (caving)

|                          |            |      |                          |                       |      |
|--------------------------|------------|------|--------------------------|-----------------------|------|
| Berrend Akkerman         | Kuranda    | 2010 | Jonathan Ham             | Bayview               | 2011 |
| Belinda Bannink & family | Mareeba    | 2011 | Robert Ham               | Bayview               | 1988 |
| Kimberlee Bernays        | Kairi      | 2011 | Phil Harrison            | Cairns                | 2007 |
| Mark Beattie             | Atherton   | 2014 | Sue Jenkins              | Silkwood              | 1992 |
| Catherine Beattie        | Atherton   | 1995 | Barry Lacey              | Balangowan            | 2015 |
| Jason Brown              | Townsville | 2016 | Lars Nauheimer           | Kameranga             | 2016 |
| Joy Burton               | Mareeba    | 2015 | Daniel Mitchell & family | Mareeba               | 2000 |
| Axel Buthmann            | Kuranda    | 2004 | Steven Morgan family     | Mackay                | 2007 |
| Van Christensen          | Dimbulah   | 2003 | Barry Neale              | Herberton             | 1994 |
| Alan Cummins (Life M.)   | Gordonvale | 1973 | Keith Offer              | Mutchilba             | 1975 |
| Chrissie Cummins         | Gordonvale | 2014 | Grant Polomka            | Tully                 | 2001 |
| Peter Cummins            | Atherton   | 1983 | Alan Pryke (SUSS)        | Yowie Bay (NSW)       | 2013 |
| David Cummins            | Doomadgee  | 1983 | Kevin Smith              |                       |      |
| Jeff Cotter              | Kawarra    | 2014 | Mike Tarburton           | Blackburn South (Vic) | 2011 |
| Bruce Dane & family      | Tolga      | 2001 | Deanne Vale              | Tully                 | 2001 |
| Jamie Ellacott           | Townsville | 2014 | Tegan Whitehead          | Townsville            | 2016 |
| Max Emeny                | Silkwood   | 2002 | Barry Wright             | Bayview Heights       | 1975 |
| English                  | Redlynch   | 2014 | Robert Zmeskal & family  | Manunda               | 2013 |
| Greg Gurnier & family    | Gordonvale | 1997 |                          |                       |      |

### Introductory Members (caving)

|                  |               |      |                         |               |      |
|------------------|---------------|------|-------------------------|---------------|------|
| Arthur Aebischer | Edge Hill     | 2016 | Peter Illig             | Smithfield    | 2016 |
| Kate Anderson    | Machans Beach | 2016 | Alison Irvin            | Victoria      | 2016 |
| Athena Andreosso | Yorkeys Knob  | 2016 | Laura Johnson           | Manunda       | 2015 |
| Marc Baker       | Tanzania      | 2016 | Michael Johnston family | Kuranda       | 2016 |
| Clare Baker      | Tanzania      | 2016 | Rodney Kiely            | Whiterock     | 2015 |
| Oscar Baker      | Tanzania      | 2016 | Jana Koelmel            | Cairns        | 2016 |
| Niamh Baker      | Tanzania      | 2016 | Lola Kuenkel            | Kuranda       | 2016 |
| John Baker       | Mt Sheradon   | 2016 | Jesse Leeves            | Babinda       | 2016 |
| Kelsea Biggs     | Clifton Beach | 2016 | Rob Levy                | Annondale     | 2016 |
| Annelies Boersen | Yorkeys Knob  | 2016 | Trevor Madin            | Atherton      | 2016 |
| Malcolm Brown    | Atherton      | 2016 | Peter McAulay           | Tolga         | 2016 |
| Lav Bodnaruk     | Sunny Bank    | 2016 | Joshua McAulay          | Tolga         | 2016 |
| Belinda Carty    | North Cairns  | 2016 | Frances McElligott      | Atherton      | 2016 |
| Shirley Casper   | Malanda       | 2016 | Gregory Okulov          | Manoora       | 2016 |
| Ryan Casper      | Malanda       | 2016 | Paul Oliver             | Kuranda       | 2016 |
| Rafael Cooper    | Manoora       | 2016 | Tanner Packal           | Cairns        | 2016 |
| Chris Cox        | North Cairns  | 2014 | Sol Paschalis           | Townsville    | 2016 |
| Steven Danks     | Mossman       | 2016 | Wuttipong Pramaree      | Manunda       | 2015 |
| Kailan Degnian   | Atherton      | 2016 | Derek Preston           | Mossman (NSW) | 2016 |
| Hans Dirks       | Currajong     | 2016 | Tracy Richards          | Kirwan        | 2016 |
| Andrew Doolan    | Edge Hill     | 2016 | Donald Rostedt          | Cairns        | 2016 |
| Maxwell Drayton  | Kuranda       | 2016 | Lifag Lin               | Cairns        | 2016 |
| Bettina Fielder  | Kuranda       | 2016 | Tim Slater              | Redlynch      | 2016 |
| Dale Fryar       | Smithfield    | 2016 | Natasha Sljivic         | Manoora       | 2016 |
| Micheal Gailer   | Caravonica    | 2016 | Damien Smith            | Manoora       | 2016 |
| Alison Galligan  | Manoora       | 2016 | Oscar Smith             | Manoora       | 2016 |
| Avalon Gardner   | Whiterock     | 2016 | Paul Thuesen            | Machans Beach | 2016 |
| Jothi Gopal      | Cairns        | 2016 | Alice Thomas            | Atherton      | 2016 |
| Mathilde Gordon  | Stratford     | 2016 | Stephanie Todd          | North Cairns  | 2016 |
| Micheala Grahn   | North Cairns  | 2016 | Jarad Tyerman           | Kamerunga     | 2016 |
| Amber Hill       | Trinity Park  | 2016 |                         |               |      |

## **Clubhouse Protocol**

1. Members have access to the Club area on the ground floor of Clubhouse building. The upstairs back residence, together with the garage and laundry area on the town side of the Club area and the adjacent yard area, are for the private use of the Caretaker.
2. The Caretaker has a lease on her part of the property and the Club has only the limited access allowed under the Residential Tenancies Act. Therefore, Members should contact the Caretaker upon arrival and before departure, but otherwise, enter the private area only on the invitation of the Caretaker.
3. Members, when intending to stay at the Clubhouse, should have the courtesy to telephone or e-mail the Caretaker to advise her in advance. If the Caretaker is absent, an email message can be sent to the current e-mail address [cavingclubcarol@gmail.com].
4. Members, when in Chillagoe, may use the Clubhouse facilities, even if not staying at the Clubhouse. However, it is courtesy to tell the Caretaker before using the facilities.

### **5. Mutual courtesy between Members (and their guests) and the Caretaker is to be expected at all times.**

#### **6. Responsibilities of Caretaker are to:**

- (a) Maintain grounds in tidy and safe condition and do any minor maintenance to buildings etc.
- (b) Keep Clubhouse clean when not in use by Members
- (c) Maintain supply of toilet paper, cleaning supplies and cleaning equipment for use by Members
- (d) Keep refrigerator and freezer ready for use by Members
- (e) Ensure security is maintained for lights, tackle and other Club property
- (f) Ensure trip book is accessible and, as much as practical, monitor trip book, particularly for the safe return of caving parties.
- (g) Collect Camping and Tackle fees on behalf of Treasurer
- (h) Report to Club Executive any problems he encounters with Clubhouse, Members or guests

#### **7. Responsibilities of Members are to:**

- (a) Keep Clubhouse and the outdoor toilet and shower block clean and tidy, while in residence. Cleanliness should be checked to be satisfactory before leaving.
- (b) Avoid use of the toilet and shower inside the Clubhouse as we have soakage pit problems which show up after there is much use of these
- (c) Park cars in an orderly fashion at the allocated parking area and keep vehicle speed down to walking pace to minimize hazard and dust.
- (d) Report to Caretaker any deficiencies in cleaning supplies, equipment etc.
- (e) Use trip book if caving
- (f) Dispose of food scraps and rubbish at the Chillagoe tip on a regular basis and when leaving
- (g) Camping inside the Clubhouse should be avoided except in emergencies (i.e. if drenched in heavy storm)

#### **(h) If using Clubhouse at night, keep noise down, particularly after 10pm.**

- (i) Behave in the town and at the Clubhouse in such a way that the Club's reputation is enhanced and not diminished.
- (j) Report to Executive any problems encountered in using the Clubhouse and make suggestions where improvements are needed.

Authorized by Committee of Management 27th April 2013.



**Tower Grike  
Ryan Imperial Tower  
Chillagoe**

**© P. Bannink**