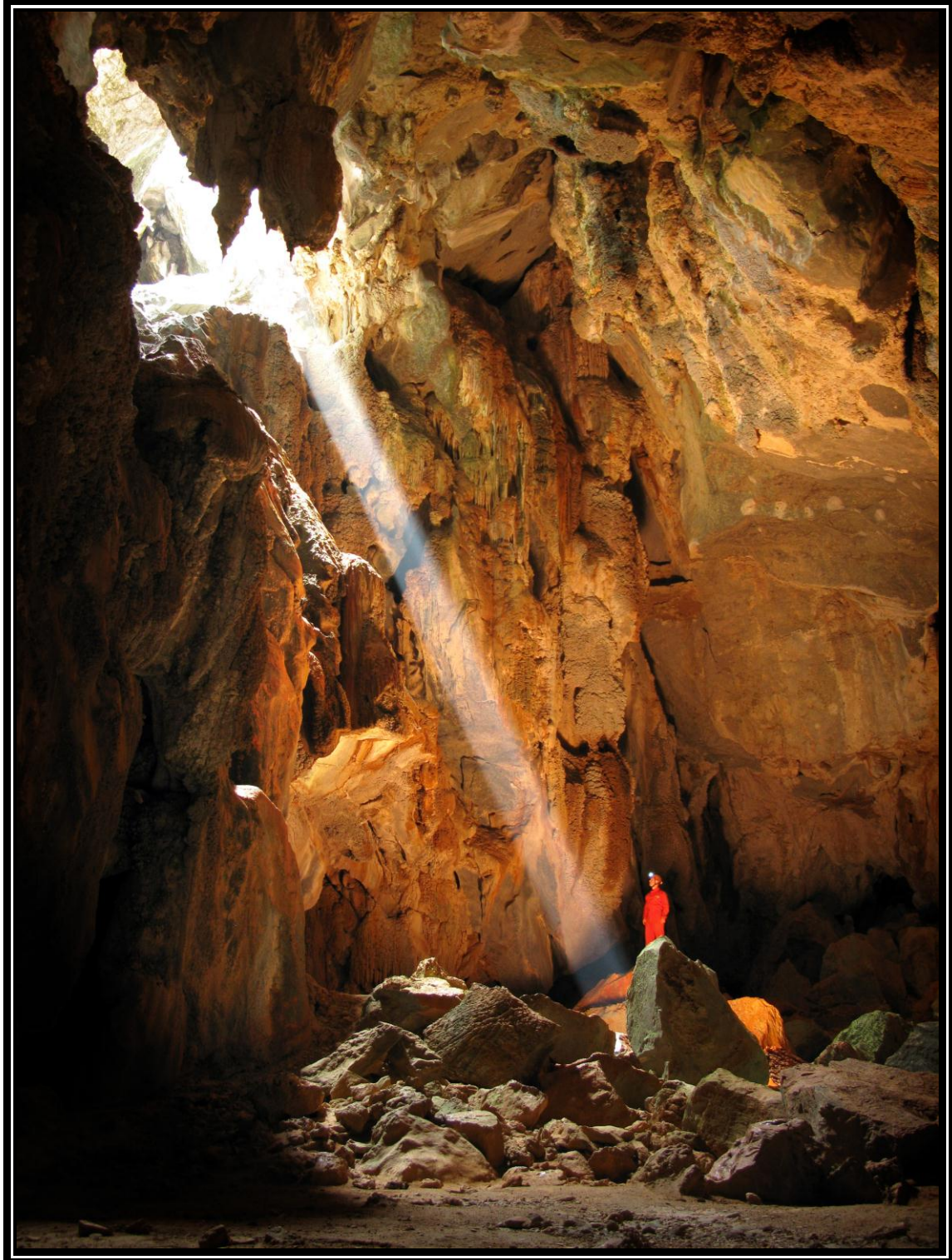


Chillagoe Caving Club

Annual Report

2012



© A.Pryke

ISSN 07291184



The Chillagoe Caving Club was formed in Chillagoe at an inaugural meeting on 23rd April, 1973 with 16 persons present. The intention of forming the Club was to bring together the active cavers already in the area to enable them to share their knowledge, expertise and equipment, and to foster caving as a sport and a science, particularly in the Chillagoe area.

The Club became an Associate of the Australian Speleological Federation not long after the Club was formed, and voted to become a Corporate Member at the Annual Meeting in 1995. The Club was incorporated under the Queensland Associations Incorporation Act of 1981.

Full Membership of the Club stands at 52 with an additional 27 Novice Members as at the end of February, 2012. The Club has become well recognised by Australian and overseas cavers and scientists as an invaluable contact in relation to Chillagoe and the surrounding areas.

The Club has an established Clubhouse in Chillagoe for the accommodation of members caving in the area.

Chillagoe Caving Club
PO Box 92, CAIRNS QLD 4870. AUSTRALIA
ABN 52 614 187 726

2011 – 2012 MANAGEMENT COMMITTEE

Patron

Tom Gilmore

President

Paul Osborne

Secretary

Mary Ann Irvin

Treasurer

Peter Bannink

OTHER OFFICE BEARERS

Survey and Records Keeper

Peter Bannink

Tagging Officer

Paco Murray

Tackle Keeper

Van Christenson

Safety and Training Officer

Douglas Irvin

Building and Maintenance Coordinator

Alan Cummins

ASF & ACKMA Coordinator

Winfried Weiss

Webmaster

Winfried Weiss

Photo Librarian

Paco Murray

Librarian

Miriam Robertson

Environmental Conservation Officer

Douglas Irvin

Publicity Officer

Wendy Lander

Auditor

Kevin Ridgeway

Solicitor

Robin Smith

CONTENTS

PAGE

Minutes of the 2011 Annual General Meeting.....	2
Presidents Report.....	9
Treasurers Report	12
Camping Fees.....	14
Membership Fees 2012/2013	14
Survey & Record Keepers Report.....	15
Building and Maintenance Report.....	16
Environmental Conservation Report.....	16
Publicity Officer's Report.....	17
Financial Report	17

TRIP REPORTS

CROP Cave Rescue Training.....	19
Chillagoe 2011 Bat Study.....	24
New Zealand 2011-2012 Expedition.....	28
Exploration & Mapping of CH538.....	33
Membership List.....	35
Clubhouse Protocol.....	37

Front Cover Photo

Daylight Chamber in Geck Cave
© A.Pryke 2009

Back Cover Photo

Formation in Column Cave
© G.Anderson 2011

Editor: P.Bannink

MINUTES OF THE 2011 ANNUAL GENERAL MEETING 30th April 2011

Minutes of the 2011 Annual General Meeting of the Chillagoe Caving Club (Inc.) held on Saturday 28th April 2011 at the Club premises, Chillagoe.

1. OPENING

The meeting was opened at 19:40hrs. by the president, Bruce Dane

2. PRESENT

See List of those present. The President announced a quorum was present, a quorum being one third of the total number of financial members and life members, and that the meeting was duly constituted.

3. APOLOGIES

Tom Gilmore, Margaret, Peter, David, Michael and Catherine Cummins, Wendy Lander, Paco, Graham and Ebony Murray, Daniel and Elwing Mitchell, and Grace Matts.

4. MINUTES

Minutes of 2010 Annual General Meeting held on the 1st of May 2010 were read. Douglas Irvin moved that the minutes be accepted; this was seconded by Van and carried by the meeting. The President, Bruce Dane, then signed a copy of the minutes as a correct record. This was handed to the Secretary, Winfried Weiss, to be kept with all minutes of the club as per the club rules.

5. Business arising from the MINUTES

Two items of business arising, ie. Accommodation and camping fees & restructuring the financials of the Club, were held over to general business

6. ANNUAL REPORTS

President's Report

- Bruce presented his report and read it out to the members.

Additions to the Treasurer's Report:

- Peter Bannink advised that he had not yet received the auditor's report. He briefly discussed his report and discussed income and expenditure in relation to the amenities block and the holding of the Chillicon conference. He stated that in his opinion we were solvent and able to cover all outstanding debts to debtors external to the club, but that the bulk of monies will be consumed by the new toilet block. The income from camping fees and rent will certainly keep the Club solvent.
- The full report will be available with the finalised Annual Report.
- In relation to the Conference Peter stated that he had not yet finalised the financial situation since there were still accounts to be received. He

anticipated a profit of approximately \$1500. He also highlighted that there was further profit to be made from selling Conference stock – USB sticks, shirts, cups and hats.

Additions to the Survey and Records Keeper Report:

- Peter discussed the work that he and Les Pearson did on the lava tubes of the Undara, Murrunga and Kinrara Basalt regions. They have been busy with it all year. There was a great review of the publication in Caves Australia and they are enthusiastic to start the next book.
- Peter also discussed the possibility of finding more lava tubes at Kinrara but highlighted the difficult terrain to get to them.

Additions to the Building and Maintenance Officer's Report

- Presented by Paul Osborne, the report highlighted that a couple of years ago he had a huge list of jobs, and that they have now all been achieved. This is a great achievement for the Club and we are now in a position to create income for the Club.
- From a maintenance point of view – most of the maintenance has been absorbed into the new building program. So we are doing well. There was an issue about who was paying rent and who wasn't earlier in the year, but that is now sorted out.
- Going on from here the biggest issues are to do with the liability the Club faces with assets, and continued refurbishment of the clubhouse (such as a new roof). It is hoped that income that can be generated which should be able to accommodate this.

Additions to the Environmental Report:

Douglas Irvin spoke to his written report discussing the mining situation in caving areas:-

- Kagara is moving to become an open cut mine again, and a new processing plant may be opened in town. There may be water issues arising out of this.
- Discussed a marble mine going into liquidation earlier in the year.
- There is a prospect in the Mitchell Palmer that may impact on some towers up there. It is not going ahead at the moment, but may be an issue in the future due to high metal prices.
- There is a company searching for rare earths in the Broken River area. They are looking between Greenvale and Mt Garnet. An eye should be kept on this.
- A lime company also has an application for exploration in for the Greenvale area. This may impact on the Broken River area. Doug suggested that the next Environment Officer might want to contact the company to form a relationship and work together. A co-operative approach may be the best option.

Websites have been provided in Doug's Report.

Doug also mentioned that Google Earth now has some high quality images of various towers in the Chillagoe area. It is very impressive now.

ASF Conference Co-ordinator's report

- Alan Cummins gave a short verbal report about the ASF Conference. It went well and we had about 75 registrations. He had planned for 150.
- The leftover soft drink has been sold to the local store at cost price. The drinks that were sold should yield about \$400 profit.
- We also have a lot of souvenirs left over. The caps and shirts may be difficult to sell, but the USB sticks should sell quickly. Alan then gave a quick overview of prices for leftover promotional material.
- Alan will ask Wendy to put together an article for Caves Australia highlighting how it went and that we have some things still for sale. It was suggested that postage will be free and that the items be sold for the advertised prices.
- A question was raised as to whether or not we need to forward copies of the Conference proceedings to the State Library. The Librarian could perhaps investigate this process.

Tackle Keeper's Report:

- Van provided a short report. He has cleaned out the tackle room. There were a lot of museum pieces and they have been removed. Members can take any of the discarded material otherwise a display may be made. We have some new helmets coming. We are also looking at some rope bags for the Club. The tackle log book shows that none of the lead acid lights and batteries have been used for some time since most people are going to LED lights. They belong to Keith Offer and they will be returned to him.

Publicity Officer's Report

- Alan Cummings read a short report provided by Wendy Lander

ASF Report

- Winfried provided a short ASF report. Highlights included WA Speleo Council, insurance, IUS exploratory committee.

Librarian's Report

- Miriam Anderson advised that Anne Atkinson has donated a lot of material on lava tubes. Miriam has a list of books in the Club.
- The New Secretary is to write a letter to Anne Atkinson thanking her for the donations to the Club.

Photo Librarian

- Paco Murray provided a report in an email. He would like to receive photos from everyone. He advised that he has not received any photos in the last 2 years.
- He asked what happened to photo competition photos from the conference. Van and Peter have them and can pass them on.

6. MOTION

A motion was moved by Paul Osborne that “The reports as tabled at this CCC AGM be accepted as presented and read’. Judy Nickles seconded this motion, and the meeting carried the motion unanimously.

7. EINSTEIN AWARD

Douglas Irvin was nominated for becoming accidentally bogged near Suicide Tower, and then trying to un-bog the vehicle with some caving gear. Unfortunately this did not work and Doug remained stuck. Luckily Keith was located driving past and was able to rescue them. It was very difficult to get them out of the Suicide bog.

Ben McGregor was nominated for injuring a fellow caver. On Easter Sunday a group were caving in the Lake area in Centenary cave. From waist deep in water everyone made their way up a steep muddy bank. Ebony asked someone to throw her bag down to her (which contained a full water bottle), she failed to catch it properly, and the bag hit her in the face. With wails of pain and much blood, it was realised Ebony had broken her nose. She was able to reset her nose herself at the time with a sickening crack. The bag was thrown by a Ben McGregor (novice member).

The award went to Ben McGregor and was accepted by Van Christensen on his behalf.

8. ELECTION OF OFFICE BEARERS

Bruce Dane declared all the Chillagoe Caving Club (inc.) positions vacant. Alan Cummins was asked and agreed to chair the meeting.

President: Paul Osborne nominated Bruce Dane. Bruce declined the nomination. Mary Ann Irvin nominated Peter Bannink. Peter declined the nomination. Van nominated Paul Osborne. Paul accepted the nomination. Keith Offer nominated Winfried Weiss. Winfried declined the nomination. Paul was declared President of the Chillagoe Caving Club (Inc.) for 2011-2012.

Secretary: Winfried Weiss nominated Mary Ann Irvin. Mary Ann accepted the nomination. Mary Ann Irvin was declared Secretary of the Club for this year.

Treasurer: Everyone nominated Peter Bannink as treasurer and he accepted the position. Peter Bannink was declared Treasurer of the Club for this year.

Other Office Bearers Nominee who accepted the position (nominator, seconded by)

Survey and Records Keeper – Peter Bannink (Winfried Weiss, Keith Offer)

Tagging Officer – Paco Murray (Van, Greg Gurnier)

Tackle Keeper – Van Christensen (Winfried Weiss, Keith Offer), Daniel Mitchell (Bruce Dane, Peter Bannink). By vote, Van was appointed by a majority vote.

Safety Training officer – Daniel Mitchell (Mary Ann Irvin, Van) – he declines. Douglas Irvin (Daniel Mitchell, Mary Ann Irvin) accepted whilst he is here. Douglas appointed.

Building and Maintenance Co-ordinator – Alan Cummins (Mary Ann Irvin, Bruce Danes)

Clubhouse Warden – Paul Osborne (Winfried, Bruce Danes).

ASF co-ordinator – Winfried Weiss (Van Christensen, Alan Cummins)

ACKMA representative – Alan Cummins (Les Pearson, Terry Matts)

Photo Librarian – Paco Murray (Van, Douglas Irvin)

Librarian – Miriam Anderson (Alan Cummins, Mary Ann Irvin)

Environmental Conservation Officer – Douglas Irvin (Terry Matts, Alan Cummins)

Publicity Officer – Wendy Landers (Terry Matts, Alan Cummins)

Webmaster: Winfried Weiss (Douglas Irvin, Les Pearson)

Auditor – Kevin Ridgeway – all in favour

Solicitor – Robin Smith – all in favour

9. RFDS (Royal Flying Doctor Service)

A motion to donate \$150 to the RFDS was moved by Douglas Irvin and seconded by Miriam. The motion was then carried by the meeting.

10. GENERAL BUSINESS

Life Membership for Margaret Cummins

- The Nomination was read out and a motion was put for Margaret to become a Life Member. Everyone was in favour of this motion and Margaret was declared a Life Member.
- A certificate will be made up and presented to her.

Modifications to Constitution

- Winfried outlined the three amendments but highlighted that we could not make the changes at the moment due to a lack of numbers and a lack of notice. It was suggested that we hold a general meeting in August to complete unfinished business from the AGM. These amendments can be considered at that meeting

- General discussion was had in relation to implications for novice members and the process for registering the membership. In particular Peter reiterated that the membership forms need to be sent to him as soon as possible and that this process is the trip leader's responsibility.

Photos and their storage and information appending to them

- Douglas raised an issue in relation to the storage of digital photos and that photo files should be labelled and indexed. After speaking to Joe Sydney he suggested a system of using categories, including a Best Of category that can, at the end of the year, be sent to the photo librarian. All photos should of course be labelled as to who took them, where, when, who was in it, etc.
- Douglas recommended that anyone storing digital photo's use this process.

Asset management

- Douglas and Paul attended the Australian Parachute Foundation AGM and discussed how they manage their assets. The assets are held by a trust and the rest of the operations are run by a separate Company. Realistic rents have to be paid to make the set-up watertight. Assets are therefore not vulnerable. Douglas again highlighted the issues of liability and that in the event of an adverse action the Club could lose our land. He suggested that the Executive needs to look at such a system in order to protect the Club's assets. Costs include stamp duty on the transfer of the assets. However it makes it much more difficult to take legal action.
- Paul also highlighted this issue and stated that the Executive will look at it this year and get actual costing and process information.
- Executive Offices liability insurance is also something to consider for this year. Paul proposed that the Executive look into this insurance. Winfried then suggested a more general insurance review.
- Mary Ann suggested a Special General Meeting in August and this was generally supported by the meeting.

Terry and Cathy Matts

- Mary Ann Irvin moved a motion to waive camping fees for Terry Matts and Cathy Draheim as recognition for the amount of work they have done here at the Club. Seconded by Bruce. (All were in favour and their camping fees were waived).
- This has to go to the Club House Warden – Paul. Paul discussed the process and did not have a problem with it in this instance.
- Doug made a general comment that people who work out here and don't go caving possibly shouldn't pay. There was general discussion in relation to this.

Recognition for Casey

- Bruce moved a motion that the Club and members provide Casey with a gift voucher for \$500 towards a tow or bull bar for his car as recognition for the amount of work he has done with plumbing the new amenities block. Seconded by Alan.

- Bruce spoke about how much work Casey has done and that he is not even a member of the caving club. He has been here many weekends.
- Peter stated that he believed it should be a building expense as he has worked so hard. He also believed that the Club will get income this year and should be able to pay for this.
- Paul Osborne suggested complimentary membership for a year as well. Les raised the constitutional requirements re membership and that we can't just offer him membership.
- Alan suggested an amendment to include 'when funds become available'.
- The following motion was put that the Club provide Casey with a gift voucher for \$500 towards a tow or bull bar for his car as recognition for the amount of work he has done, when funds become available. The Club will also offer Casey introductory membership at no cost.
- The motion was put to a vote and all were in favour.

Cave Rescue

- Winfried raised the fact that Ross Anderson is coming up in August to present the ASF's CROP (Cave Rescue Orientation Program). This was arranged as he had a spare flight to use up.
- Terry Matts then offered CCC the NSW Cave Rescue training package.
- A general discussion was then held as to the various different types of training out there (NSW, ASF, NZ) etc.
- Paul raised the issue that we really need to do more as we have been lucky so far. This was generally agreed upon. Paul also raised the issue that the SES, police etc would probably not be able to help much.
- Phil then discussed the outcomes we are aiming for. Are we looking for in house training or actual recognised training that allows us to work with other organisations? There was general discussion in relation to this.
- Winfried stated that recognised training might be the way to go.
- Bruce then raised the issue that we have a large area to cover and that we need to have recognised training to deal with areas other than Chillagoe. Bruce also believes we might be able to get some funding for this as long as it is accredited training.
- Terry provided some information on the NSW process. Paul stated that valuable issues had been raised and he will follow it up.

Club fees

- To be discussed in an August meeting

Clubhouse Cleaning

- The management committee to work this out as they are authorised to deal with the day to day running.

There was further discussion in relation to invoices, and vague use of facilities. There is a need for updated rules for the use of facilities.

Mattresses and Covers in old school building

- Bruce spoke to the particulars of the mattresses and how they were obtained. He spoke about the grant and also about how Dingo Seat covers has made the mattresses and that they were happy to do it in advance of payments.
- They are also happy for payment to be delayed until we receive the grant money. If the grant does not come through then we need to consider other options for paying for these mattresses.
- Bruce also stated that there is 30m of vinyl left over and that can be used to make items for the Club such as rope bags etc.

Motion to Ratify Decisions

- A motion was moved by Alan Cummins that “The actions and decisions of the Management Committee over the past 2010 – 2011 year be ratified and approved”. Les Pearson seconded this motion, and the meeting carried the motion unanimously.

Public Liability

- Discussion then began again about public liability insurance. A brief check of the insurance documentation shows that we do not seem to be covered for public liability.
- Alan proposed a motion that ‘the Executive arranges a cover note for public liability insurance for the Caving Club premises by Tuesday morning as a matter of priority’. Seconded by Cath Draheim.
- All in favour.

Paul Osborne declared the meeting closed at 22:48hrs

PRESIDENT’S REPORT 2012

Well that was interesting. Although I have been on the committee once before, it wasn’t quite at the pointy end like the Presidents job.

The Club has come a long way since I was last on the Committee and it’s a credit to the previous committee for their perseverance, foresight and energy to develop the Club and its assets to where they are today. I stepped into the president’s position at a time when Chillicon had just been completed, the amenities block had been built to useable stage, the old school house had been renovated and the rear paddock had been converted to a camping area.

Much of this was driven by the need to attract more groups and members to use the facilities we have and so generate income to pay for the expenses of running the asset.

Insurance

Our first item on the agenda for the year was to address the club’s insurance (or lack of it). The committee has recognized that with the free holding of the property and the additional assets built and renovated since, our insurance and liability protection needs have changed considerably and that finding the appropriate insurance should become a priority.

Whilst early efforts were frustrating and seemingly out of our financial league, MaryAnn took up the challenge.

We were able to get a more realistic asset valuation and due to Mary Anne's persistence were able to eventually procure insurance for the property including \$20M legal liability cover which we never had before.

The buildings are now insured for \$800K replacement value which we think is a fair valuation.

Clubhouse facilities

With the Old School building now being usable and the new toilet block and camping area needing cleaning / maintenance, we would be stretching the limits of Carol's caretaking agreement if we were to expect her to clean and maintain the extra facilities. We therefore need to take it on ourselves or set aside a proportion of the camping fees to be spent towards a nominal payment to a local person willing to take it on under Carol's supervision.

During the past year we have seen a number of groups using the facility and providing the much needed revenue for upkeep and we must foster these groups in the future as well as continuing to encourage new membership and member use of the club facilities. During the year the committee observed that quite a number of people were going caving and using the clubhouse as a base without opportunity to support the club financially. To this end we provided a donation box for people to show appreciation of a good value time and to this date has raised well in excess of \$300.

Another initiative has been to prevail on members to sign up visitors for novice membership. The advantage of this is ASF membership and insurance, access to National Parks Caves, being put on the club email list and a 50% reduction in camping fees.

This has been accepted well and a book of membership paperwork is available at the clubhouse. This has generated additional funds but there are a few shortcomings with the present fee structure and a proposal will be put to the AGM to rectify this.

Membership

There have been quite a few new members that have been quite active although we are currently experiencing a shortage of trip leaders actively available to take new members caving.

Understandably, a number of our trip leaders have been taking a break since their monumental efforts leading up to Chillicon. Ok, you've had your break, we miss you and would like to enjoy your company once again and we certainly need a hand in encouraging and leading new members.

Peter Bannink, Deanne Vale and Grant Polomka have been assessed as horizontal trip leaders and are awaiting the official nod from the secretary as I write. Congratulations to them for stepping up to the plate and I'm sure they will be a valuable asset in forthcoming club caving activities.

While I can understand some member's reservations about taking on the responsibility of trip leader, there are many members who are quite highly experienced who would be well suited to share the load and contribute to leadership and training roles to ensure that new members get the most from their experience with the club. Download the application form from the website, put your name on the top and email it to me as I seem to be the only assessor to be available at present. (Please correct me if I'm wrong).

Expeditions and caving activities.

There have been a number of caving weekends at Chillagoe where a number of new members have had the opportunity to advance their skills.

We had a very successful and well attended cave rescue weekend run by Ross Anderson from WA. Much was learnt and the club can have some confidence that should we need the skills, we are much better placed to carry out a successful rescue.

Chillagoe Caving Club had its regular expedition to Broken River in June/July and at the same time was represented at Bullita NT for the Annual Expedition to the Gregory National Park. The Broken River Expedition is on again this year from the 23rd June with an emphasis on surveying and updating cave information that will be of invaluable assistance should the area come under threat by mining etc.

Paco organized and led an expedition to the Ellis Basin in NZ to push the current deepest cave in the southern hemisphere. There were four club members who participated in this expedition. Max Emeny has been working in a mine in Woodlark Island in PNG and has had the opportunity to explore numerous caves on the island.

Website

The website is being upgraded so that it's more useful to prospective, new and existing members in that the calendar will be continuously updated with bookings for caving activities and clubhouse bookings as they come in. We are updating photos and information to reflect the current state of play and it should be easier to add photos and trip reports in the future.

Acknowledgements

My co-committee members Mary Ann and Peter have been tireless in keeping me on track looking after the club. They have put in an extraordinary effort this past year and it's a shame to see Mary Ann move out of the area but I wish her and Doug all the best in their future home even if it is in NSW.

Many of the club members have put in their little bits and sometimes big bits and I thank them for their contribution. It's what belonging to a club is all about and makes the experience more enjoyable.

And of course Carol, our fearless caretaker with the endless sense of humour without whom we would not turn up to a clean, well-cared for and homey atmosphere. Special thanks should go to Barney this year as he has put in a considerable amount of time that most of us don't see. He's always willing to chip in with helping out round the place with those jobs we don't get around to doing.

Thanks everyone for making the president's position one that has been more enjoyable than I thought it would be. If somebody wishes to nominate for the position at the AGM I would be happy to hand it over and provide back-up assistance. Failing a rush of takers, I'm happy to accept the nomination for another year.

Paul Osborne (President) (7 May 2012)

TREASURERS REPORT 2012

This year has been a very stressful year for the Treasurer as post conference and building costs drained the clubs finances to such an extent that some bills owed to members had to be put on hold. Fortunately the grant for purchasing the mattresses was awarded to the club helping us to struggle along. Increased revenue from the use of the facility by TAS and the Army has helped us to stay afloat. In addition to the large bills, the executive had to budget for basic liability and property insurance. After months of negotiation this was settled at an annual cost of about \$4500.

Building Summary

This covers two years of preparation and expenditure. Some members may be aware that over the past four years the club has received over \$87,500 in donations towards the building refurbishment program. How that money has been spent is outlined in the summary table below.

	Donations	Major Expenses	
2008	\$ 3,700.00	2,201.05	Freehold
2009	\$10,000.00	16,419.95	Freehold
2010	\$50,000.00	6,400.00	Building expenses
2011	\$15,000.00	12,385.80	Old School
		40,201.95	New Amenities Block
		3,113.45	Water Upgrade
2012	\$ 8,800.00	23,121.27	New Amenities Block
Total	\$87,500.00	18,621.00	Freehold Land
		85,222.47	Building Total

A comparison between the donations show that just about all the money donated to the club and allocated to the building upgrades has now been spent. The refurbishment is slightly over budget and all the clubs savings have been spent as well. Any continuation of this work will require future funds to be donated to the club. The generosity of these anonymous donors have seen the club increase its building asset base (three buildings) to a value exceeding \$800,000, where only a few years ago, the clubhouse was only worth at about \$230,000.

Conference Summary

The conference finances have been very difficult to sort out especially chasing up late payments, the last of which came in September 2011. Covering two financial years, I have only now been able to summarise the results. I have no experience with

financing so what has been included in the losses and profits may change once the figures have been examined by the Auditor.

I had to separate out all the trading stock from basic income and costs for all the items. Overall profits are outlined below.

Catering

	<u>Income</u>		<u>Costs</u>
Catering Receipts	14,601.00	Catering Payment	12,589.20
SAS BBQ Income	1,423.00	SAS BBQ Payment	1,312.00
		Breakfast Payment	912.00
Total	\$16,023.00		\$14,813.20

Conference Stock

	<u>Cost</u>	<u>Sold</u>	<u>Lost</u>	<u>Left over</u>	<u>Profit</u>
Caps	1072.50	189.00	214.50	707.85	38.85
Stickers	307.89	372.00	53.37	63.63	181.12
Mugs	1225.84	1080.00	89.89	400.44	344.50
USB+P	2976.60	2460.00	0.00	0.00	832.79
USB	0.00	375.00	138.91	912.82	77.43
Shirts	2431.00	1475.00	48.62	948.09	40.71
Handbook	148.00	105.08	42.92	0.00	0
Total	8161.83	6056.08	588.21	3032.84	1515.30

Final Summary

	<u>Income</u>		<u>Costs</u>
Photo Competition	110.00	Promo CD	859.00
Bus	120.00	Logo Design	154.00
Catering Profit	1,209.80	Dinner Entertainment	500.00
Stock Sale Profit	1,515.30	Print	60.00
Auction	140.00	Sundry expenses	60.65
Registration	817.92	Stock loss	588.21
Soft Drink Profit	513.00		0.00
Total	\$4,426.02		\$2,221.86

This simple summary excludes the camping revenue generated by everyone staying at the club house which has been included in the years 'general' camping income. Total conference receipted income was a staggering (\$23,967), while expenditure was (\$25,872). Most of the total amounts were tied up in the purchase of conference stock and the cost of catering for the conference. A major problem for the club is the remaining stock worth (\$3032.84), which may or may not be sold in the future. If any of this stock is written off then the minor profit will become a loss. Holding the conference was a daunting experience and not one I would recommend to any club as small as ours.

In summary, although the club made a small profit from the ASF Conference, most of this is bound up in the excessive conference stock the club currently holds on its books. Looking forward the current funds held by the club (~\$19,000) is largely the Solar Grant (\$14,148) which will soon be spent. Another large bill paid in early February was Property insurance costing approximately \$3500 leaving only about \$2000.00 to carry us through to the next financial year. This makes it difficult for the future Executive to manage the club's funds and deal with the expected increase in

club costs (principally insurance). In order to manage the increased costs the club now needs to ensure revenue exceeds expenditure and this means promoting the use of the facilities by large caving, adventure or school groups. The small amount of revenue generated by our small number of club members (18 active cavers) will not sustain our facilities.

P. Bannink (Treasurer)

(April 2012)

CAMPING FEES 2011/2012

Members:	\$5.00 per person per night
Members Students (school age):	\$2.00 per person per night
Other Clubs:	\$7.00 per person per night
Non Members:	\$10.00 per person per night
Non Member Students (school age):	\$5.00 per person per night

Membership Information on Fees for 2011/2012

1st May 2011 – 4th May 2012

Our Constitution indicates that fees become due on 1st May each year and must be paid by June 30th of that year to ensure that insurance cover available through the ASF Insurance Policy continues after June 31st of that year.

To enable the Club to function, early payment of fees is necessary and the Management Committee would appreciate your prompt payment.

Fee Structure is as follows:

• Single Members (including full year ASF Fee)	\$98.00
• Family (including full year ASF Fees)	\$182.50
• Student Members (12 months - including full year ASF Fee of \$61)	\$78.50*
• Novice Members (6 months - including 3 months of ASF Fees)	\$35.00**
• Student Novice (6 months - including 3 months of ASF Fees)	\$30.00 ^^
• Inactive Life Members (ASF Fees only)	\$23.00
• Active Life Members (ASF Fees only)	\$68.00
• Single Members (without ASF Fees)	\$30.00#

* - Students including those attending Primary or Secondary Schools who cannot be included in a family membership.

** - The novice fee of \$12.50 is for 6 months, but ASF Component of \$20 is only for trial period of 3 months and beyond this a club fee of \$14.50 and ASF fee of \$48 will have to be paid to make up to full single membership.

^^ - The student novice fee of \$6.00 is for 6 months, but ASF Component of \$20 is only for trial period of 3 months and beyond this a club fee of \$6.50 and ASF fee of \$41 will have to be paid to make up to full student membership

- While it is intended that all active members join ASF some existing members, who are no longer active cavers, are continuing as Club Members only.

Please note: a major component of the ASF fees is insurance which needs to be paid by all active members of the club, especially those intending to cave in National Park area's and Reserves.

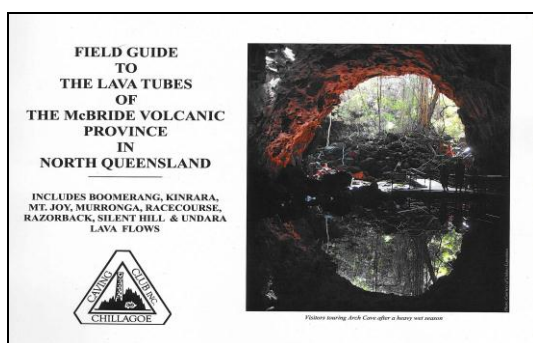
Membership Fees can be paid either by cash or cheque to the Treasurer, or direct to the Club's bank account. Should the latter method be chosen you must advise the Treasurer where the money was deposited, the date of deposit, the amount deposited, whom the deposit is for and what it was for? In the absence of this information it is not possible to give the member concerned any credit for the payment until the information is received. It is possible for this information to be made by your bank if you make a miscellaneous deposit and request that the above detail of payee and purpose of payment be included for listing on the Club's account statement. If paying by internet Banking or by direct deposit please email the details to the Treasurer, Peter Bannink, preferably by *email* : peter.bannink@derm.qld.gov.au or by phone (4092 6036)

For direct banking please deposit funds into the Club's Commonwealth Bank account at any local branch. The account number is BSB 064804 A/C No 00912281.

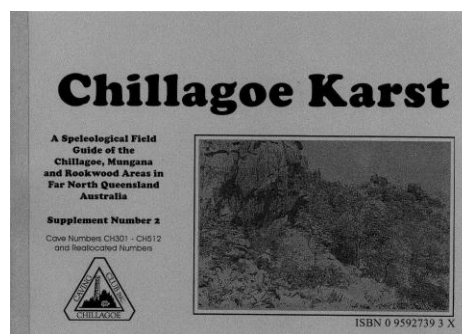
SURVEY AND RECORD KEEPER'S REPORT

New Publication

At the end of last year Les Pearson and Peter Bannink announced the completion of the new **Field Guide to the Lava Tubes of the McBride Volcanic Province**. A recent reprint of 10 copies means it is now available to interested club members to purchase at a cost of \$25.00 (excluding postage).



RRP \$25.00 (Members)/ \$30.00 (Non Members) + Postage



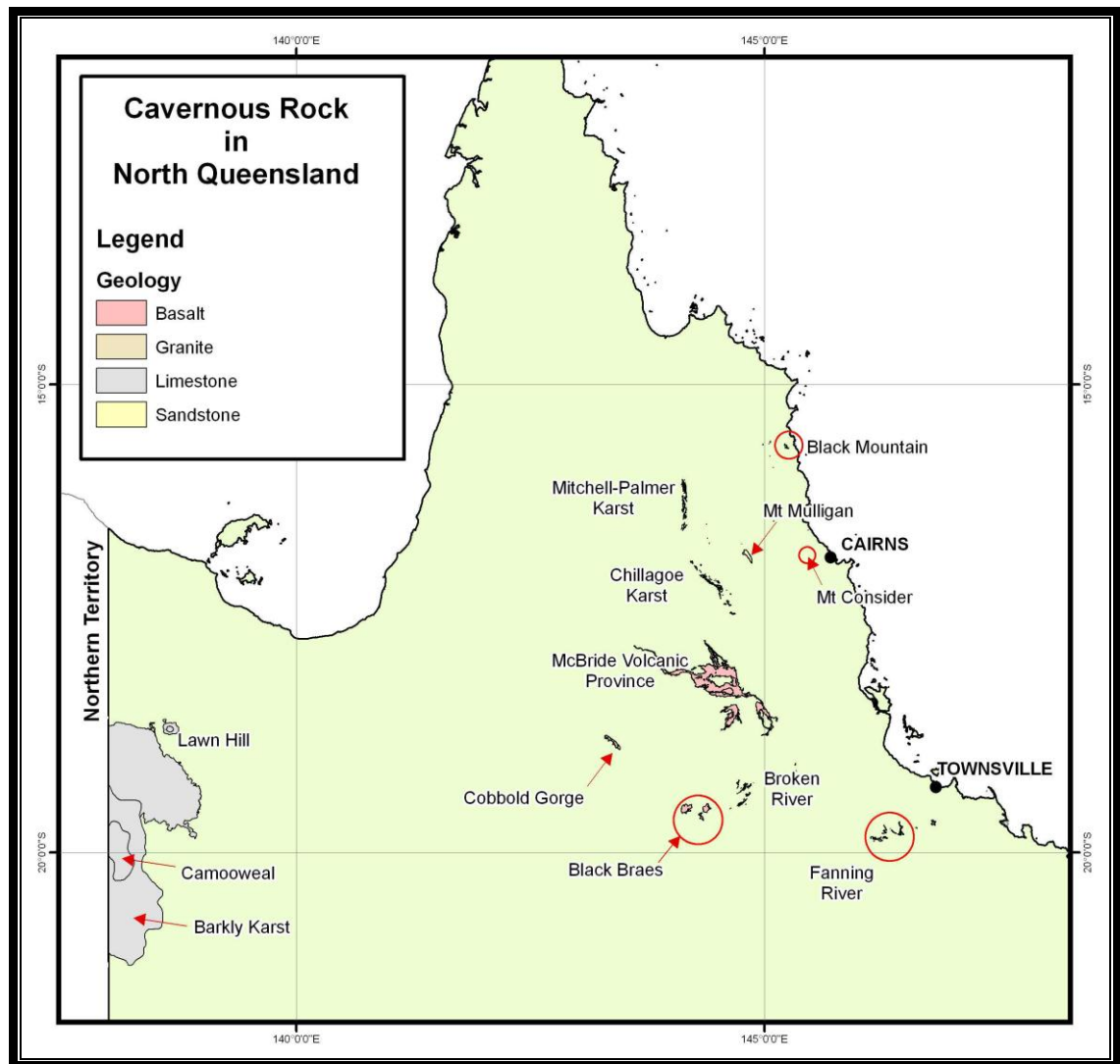
RRP \$15.00 (Members)/ \$20.00 (Non Members) +Postage

Trip Reports

For the first time in 5 years I have a new trip report. These have been added to the End of Year Report and I hope you enjoy reading them. Many thanks to the few members who put some time into generating them, some of the pictures are excellent. A few new cave entrances have recently been discovered and tagged in Chillagoe; I will document the updated karst records next year.

New Karst Mapping

Peter spent a month in January working for a group in Brisbane mapping groundwater dependent ecosystems. This required cavernous geology to be examined in selected area's across the state. The aim was to identify areas where stygobiont fauna (animals living in groundwater) can be expected to be found in cavernous karst. Areas reviewed are Camooweal and the Barkley Karst region in addition to the Texas Cave Area in South East Queensland. While 90% of the caves in Queensland are still found in the CCC caving region, the club now has a wider knowledge of all the caving regions across the whole state.



Map of Cavernous Geology across North Queensland

P. Bannink 2012

BUILDING AND MAINTENANCE REPORT

An admission! I have done nothing! After the conference I was all worked out! Plus all the Club's money was spent, result-nothing was done. Then as things started to happen again Margaret was diagnosed with cancer on the brain, and has spent over 4 months in bed, she is slowly recovering. A very big thanks to all those who have helped out, it is very much appreciated.

The facilities are being used, while there is plenty of maintenance still to be done everything is acceptable and we should soon be able to get on with some more work. I'm looking forward to getting back into caving again,

Alan Cummins.

ENVIRONMENT & CONSERVATION REPORT

Presented verbally at the 2011 AGM by Douglas Irvin.

TACKLE KEEPER'S REPORT

Presented verbally at the 2011 AGM by Van Christensen

PUBLICITY OFFICER'S REPORT

The past year has been busy with the Chillicon conference publicity. I have been putting together brochures, information sheets, and generally getting the word out. Thank you to those who have been able to help me.

As for the club meetings these have been emailed to club members by Paul our president, for the most part I did not advertise them in the local paper and radio as I have done previously.

Happy Caving Wendy Lander

FINANCIAL REPORT

STATEMENT OF RECEIPTS AND EXPENDITURE FOR THE YEAR ENDED 29TH FEBRUARY, 2012

2011		2012	2012	2012	2012
		<i>Membership</i>	<i>Buildings</i>	<i>Conference</i>	<i>Sales</i>
	<u>Receipts</u>				
3,577.50	Membership Fees	4382.00			
6.00	Tackle Hire	73.00			
	<u>Bank Interest</u>				
1.03	Commonwealth	3.47			
1,509.65	Bendigo Bank	113.15			
	<u>Chillagoe Property</u>				
3,280.00	Rent Received		2,880.00		
2,092.20	All Camping Fees		8,027.00		
15,000.00	Donations Building Fund		8,800.00		
5.00	Donations - Other		859.45		
	Grants		27,635.50		
	<u>Fund Raising</u>				
148.00	AGM Auctions		200.00		
95.00	Club BBQ		144.00		
	<u>ASF Conference</u>				
11,500	Conference registration		7,659.00		
	Conference food		3,884.00		
	Conference bank cheque withdrawal		824.00		
	<u>Trading</u>				
321.45	Publications		964.35		
	Bunk Beds sold on				380.00
	Conference caps				171.00
	Conference stickers				36.00
	Conference USB				705.00
	Conference shirts				1,035.00

	Conference Mugs			84.00
	Conference soft drinks			513.00
	Conference Bus			480.00
	Old conference T-shirts			10.00
	Conference Photo entry			110.00
	-----	-----	-----	-----
		4,571.62	48,545.95	12,367.00
		-----	-----	-----
37,535.83	<u>Total Receipts</u>			69,972.92
2011		2012	2012	2012
		Membership	Buildings	Conference
				Sales
	<u>Less Expenses</u>			
1,890.00	ASF Fees	3,606.00		
41.00	Incorporation Fees	0.00		
167.10	Stationery & Postages	45.00		
79.50	PO Box Rental	86.00		
2.00	Bank Fees	0.00		
840.00	Website Expenses	360.00		
385.00	Audit Fees	440.00		
300.00	RFDS Donation	0.00		
	<u>Subscription</u>			
55.00	ACKMA& Helictite	92.00		
	<u>Chillagoe Property</u>			
233.00	Council Rates			
	& Water Charges	470.90		
1,098.24	Property Insurance	3,064.10		
944.05	Electricity	1,533.55		
250.00	Workcover	275.00		
1,182.30	Purchases (Freezer, etc.)	12,388.95		
12,385.80	Old School Building Refit	216.27		
3,113.45	Upgrade Water Supply	0.00		
40,201.95	Amenities Block	23121.27		
1,920.00	Caretaker's Costs	1,920.00		
1,233.00	Maintenance	0.00		
215.44	Sundry Expenses	60.65		
	<u>ASF Conference</u>			
2,393.39	Conference Expenses		16,241.20	
	Conference re-payments		1368.00	
	<u>Trading</u>			
	Conference purchases			6633.44
240.90	Book purchases			321.20
125.00	Purchase of IBSN Numbers			0.00
	-----	-----	-----	-----
	<u>Sub Totals</u>	4,629.00	43,050.69	17,609.20
		-----	-----	-----
	<u>Receipts less Expenses</u>	(57.38)	(5,495.26)	(5,242.20)
				(2,466.29)
\$69,296.12	<u>Total Expenses</u>			\$72,243.53

(\$31,760.29)	<u>EXCESS OF RECEIPTS OVER EXPENDITURE</u>			(\$2,270.61)

CHILLAGOE CAVING CLUB INC.
(ABN 52 614 187 726)

CASH BOOK BALANCE

52,990.65	Opening Balance as at 1 st March 2011	21,230.36
(31,760.29)	Less: Excess of Receipts over Expenditure	(2,270.61)
-----		-----
<u>\$ 21,230.36</u>	<u>TOTAL FUNDS – 29TH FEBRUARY, 2012</u>	<u>\$18,959.75</u>

BANK RECONCILIATION

14,206.80	29 th February, 2012 Commonwealth Bank Balance	19,426.39
250.00	Add: Outstanding Deposits	40.00
-----		-----
14,456.80		19,446.39
154.00	Less: Outstanding Cheques	794.35
0.00	Less: Outstanding Refunds	253.00
-----		-----
14,302.80		18,419.04
6,927.56	Add: Bendigo Bank Account	540.71
-----		-----
<u>\$ 21,230.36</u>	<u>TOTAL FUNDS AS ABOVE</u>	<u>\$ 18,959.75</u>

TRIP REPORTS

CROP Cave Rescue Training

August 19 -21, 2011

Text by Douglas Irvin

A training weekend was planned for August and Chad, (Chillagoe Police), National Parks, SES and Mungana Mines were invited. Emails were sent to Club members. It was to coincide with a Club Special General Meeting to be held on the Saturday night. Ross Anderson (Chair, ASF Cave Rescue Commission) from Perth was to officiate. A disc of PowerPoint presentations, forms and manuals was sent to us.

Friday 19th August.

Ross arrived at a cheery 4:10am on the direct flight from Perth. I took him home for a quick snooze before Winfried was due to pick us up for a ride to Chillagoe. Arrived Chillagoe at lunch time. We went out to Carpentaria to plan the in-cave exercises. Various sites were chosen.

Paul arrived later and the computer was set up for the presentations. A white board was brought over from the Schoolhouse.



Back. Horrie Garth, Winfried Weiss, Bones Mitchell, Paul Osborne, Van Christensen, Peter Bannink, Grant Polomka, Ross Anderson, Front. Douglas Irvin, Kimberlee Bernays, Mary Ann Irvin, Deanne Vale.

Saturday 20th august

The CROP (Cave Rescue Orientation Program) is designed to prepare cavers for rescues. Rather than lecture style it was more like a workshop with lots of discussion. The following presentations were given

1. Introduction	Ross Anderson (RA)
2. Cave environment	Douglas Irvin (DI)
3. Minimum Impact	RA
4. Incident Control	RA
5. Logistics	RA
6. Communications	Paul Osborne (PO)
7. Cave search	Winfried Weiss (WW)
8. Initial response	DI
9. First Aid	RA
10. Medical considerations	WW
11. Psychological considerations	PO
12. Equipment	RA

Points raised:-

- Need to have a cave familiar para-med, Doctor or nurse available.
- Cave conservation - be aware of bat and swiftlet roost sites especially during breeding season.

- Retain a laminated contact list on your person.
- The most knowledgeable caver stays outside for task allocation.
- First Aid kits to include- documents, wipes, lollies and antiseptic powder.
- Cave more safely than usual as a second casualty really slows a rescue.
- Never raise your voice to distressed or disturbed people (see Mental Health First Aid)
- If you have been awake for 18 hours you perform the same as at the 0.05 alcohol level. All rescuers have to watch each other closely for signs of fatigue eg lack of coordination, slurred speech.

After lunch there was a review of every ones personal gear, First Aid kits and stretchers. Chad (current Chillagoe Police officer) spoke about the position of Police in a rescue.

Additional points raised:-

- Club needs to prepare contingency plans for Broken River (BR) expeditions. The club needs a second stretcher for BR expeditions.
- Use one stretcher for practice and one for real.
- Put plastic protection under the current CCC stretcher.
- Look at EPERB or Spot for BR expeditions.
- Look at phone and UHF coverage for Chillagoe.

Paul was put into the small stretcher. This was not very comfortable. Ross demonstrated that it can be easily rolled onto it's side into the recovery position if the patient has to vomit or becomes unconscious. He was put into the big stretcher (the wrong way round). There were demonstrations of lifts and lowers, turns and reversals. Lap, snake and turtle passes were tried going under benches and up stairs.



Recovery position



Paul Osborne in full stretcher



Carry



Snake pass

The group went to Carpentaria Cave for a quick rescue exercise.

Winfried Weiss led his group until he simulated eyes full of sand effectively blinding him. It was judged a self-rescue and he was led out.

DI took Paul, Grant and Deanne until he simulated a fall badly injuring the right wrist or lower arm. Carefully sliding down the slope to a safe area this was looked at and a sling put on. It was decided that it was a self-rescue. With assistance he was helped out.

Ross led his group until he simulated a fall and very badly injured his right lower leg. The team improvised a splint using a cave sign. It was judged that he could be assisted out. He passed out and that changed it to an outside rescue.

In the de-brief it was suggested that Winfried's eyes should have been bandaged to stop sand causing more scratching on the eyes.

Overall, this exercise went very well.

Winfried and Ross went to New Southlander Cave for a quick visit. Winfried had to return to Atherton for work later that night.

Sunday 21st August.

Ross set up a scenario for the morning's exercise of a 3 person party in Carpentaria having one of them falling and injuring a leg. One stayed with the injured and the other got the message to the Police. The Police got CCC to do a rescue if possible.

Mary Ann and Van went into the cave as the flashlight cavers.

Ross gave Paul the task of being Incident Controller as he was less familiar with the cave than Bones.

Two search team were prepared-

Team 1 (T1) Peter, Deanne and Grant

Team 2 (T2) Douglas, Horrie and Kimberlee

T1 was to search to the right of the cave and T2 to the left. They were given 15 minutes and T1 left at 9:42 and T2 at 9:44. After about 5 minutes T2 found Van. He was sitting in the dark with a failed light. He appeared confused and told of the other injured caver going unconscious. He was going out to raise the alarm when his light failed. He did not know where the injured person was. T2 escorted Van out of the cave and reported to Paul who sent T2 back in to continue searching.



DV, MA & KB



Loading short stretcher



Long stretcher



Mary Ann wrapped

T2 (Peter & Grant) then came across T1 who reported finding the patient. They were going out to report to Paul. T1 went to where the patient was and found Deanne looking after her in the recovery position. Peter, Paul and Grant brought in the stretcher and First Aid kit. Bones was left as Entrance Control.

Douglas produced a space blanket which then partly delaminated. This was put over Mary Ann. She woke up and was assessed as ready to be stretchered out. The short and long stretchers were put in place.

Paul then organised scout, carriers and clean-up parties and the move started.

There was a low lift then a haul up a small slope. The next obstacle was a lift and pass along a narrow passage. Mary Ann had to stand upright for the carriers to pass and KB & DI did a turtle pass. At the entrance a snake pass was done past a low point. Out by 11:30.



Out



Wrapping up

The extensive “hot debrief” took about an hour.
Discussion.

- Was it right for all of T2 to escort Van out or only 1 to do this and the others keep searching?
Ross thought it best for the whole party to go out. Any problems with a lightless disoriented caver are better handled by the group.
- 15 minutes was not enough initial search time. 20 would be better
- Douglas led T2 to Mary Ann as found by T1. T2 should have gone out with T1 to help carry gear. Also Peter did not report that T2 was going to MA. Paul thought them overdue.
- The patient packing and carry out went very well.
- The Michie phone was laid out from the entrance did not work which was disappointing.

The group returned to the Clubhouse and packed up. Ross was dropped off in Cairns.

Overall everyone had a very instructive weekend.

[Chillagoe 2011 Bat Study](#)

Between April to October 2011 Bachelor of Science Student Lara Upton and assistant Hunter McCall from James Cook University spent many weeks at Chillagoe undertaking a study into the thermoregulation (the control of body temperature) of

two species of micro bats inhabiting Kiwi and caves. A brief description and summary of her study (Thesis) is outlined below. The two graphs she has included show just how stable the environment in these caves are, fluctuating only a few degrees over the winter period.

How do Microbats tolerate the conditions of tropical hot-roosts?

By: Lara Upton Photos: Johan Larson

By precisely regulating body temperature and controlling the loss of body heat to the environment, endothermic mammals have been able to exploit a wide range of thermal conditions. Patterns of metabolic heat production and rates of heat loss are strongly influenced by the thermal environment. Small mammals produce more heat per unit of body mass than large mammals but lose heat rapidly over their proportionally large surface area. Because of this high rate of heat loss, the range of tolerable ambient temperatures is diminished for small mammals compared to large mammals. Several small bodied Microchiropteran species selectively roost in caves with hot and humid microclimates. These conditions can provide energetic benefits, enhance social interaction, increase predator avoidance and promote reproductive success, however they also present challenges to heat loss and body temperature regulation which can rapidly become lethal.



Dusky Leaf Nosed bat roosting beside one of the data loggers on Kiwi Cave



Harp trap set up outside Tea Tree Cave

This study measured the metabolic response and patterns of heat loss of two species of Microchiropterans to different ambient temperatures (23-35°C) at high humidity (90% RH), known to roost in 'hot-caves' in the Chillagoe-Mungana National Park. *Hipposideros ater* (the Dusky Leaf-nosed bat) weighs on average 5.4 ± 0.28 g and *Rhinolophus megaphyllus* (the Eastern Horseshoe Bat) weighs on average 7.8 ± 0.25 g. Both species have a wide tropical distribution. Through practiced methods of respirometry we investigated the physiological means by which these species survive and tolerate the conditions of their selected roost environment. Measured responses to different temperatures were metabolic rate (oxygen consumption/carbon dioxide

production), respiratory rate, tidal volume, body temperature, dry heat loss and evaporative heat loss.

Between April-September temperature and humidity remained relatively constant inside the roosting chamber of Kiwi Cave (approximately 12 metres from the cave entrance). Temperature ranged from 28–30.8°C with an average daily temperature range of $0.06 \pm 0.04^{\circ}\text{C}$ (**Figure 1**). Ambient temperature outside the cave was less consistent, fluctuating between 10.8–37.0 °C with a daily temperature range of $15.3 \pm 2.1^{\circ}\text{C}$. Relative humidity inside the roosting chamber of Kiwi Cave ranged from 84–90% between April- September with a daily range of $0.8 \pm 0.4\%$, while external humidity averaged 52% with a daily range of $49.7 \pm 8.6\%$ (**Figure 2**). The range of temperatures experienced in the cave decreased with distance from the entrance, as did the diurnal range of temperatures. The average temperature recorded in the roost-site at Teatree Cave in August-September was 29.44°C, ranging from 29.2–30.1°C.

The results of the physical experiments revealed that both species maintained a metabolic rate lower than that expected for mammals of their body size (37% of expected for *H. ater* and 77% of expected for *R. megaphyllus*). This means internal heat production is minimised. Even at high temperatures (29–35°C), individuals maintained a body temperature higher than that of the environment, creating a gradient in temperature whereby heat is shed to the cooler ambient air. Rates of dry heat loss over this gradient were higher than expected for mammals of similar body mass (124% and 94% for *H. ater* and *R. megaphyllus* respectively). These high rates compensate for the ineffective methods of evaporative heat loss (i.e. sweating, licking exposed surfaces, panting) which were restricted by the high moisture content of the humid air. By monitoring behaviour, tidal volume and respiratory rate we were also able to determine that individuals did not become stressed at the temperatures they were exposed to and potentially tolerate temperatures above 35°C with high humidity, which is likely a lethal environment for many similar sized mammals not adapted to these conditions.



The respirometry equipment set up in the old school house

I would like to send a big thank-you to all the folks at the Chillagoe Caving Club for your support, interest and enthusiasm for this research, it is very much appreciated. Thanks also go to the National Park Rangers for their support and input. Funding was provided by the National Climate Change Adaptation Research Facility, Skyrail Research Foundation and James Cook University.

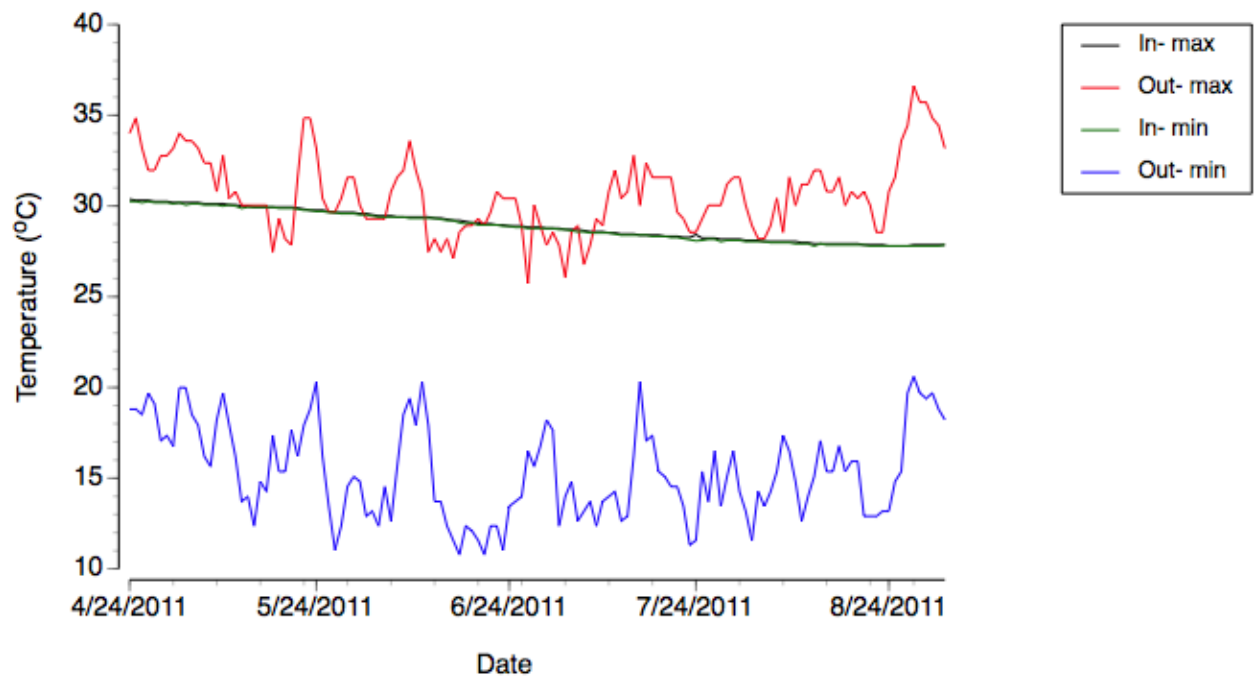


Figure 1: Daily temperature range inside the roosting chamber of Kiwi Cave compared to external daily temperature variability from April to September.

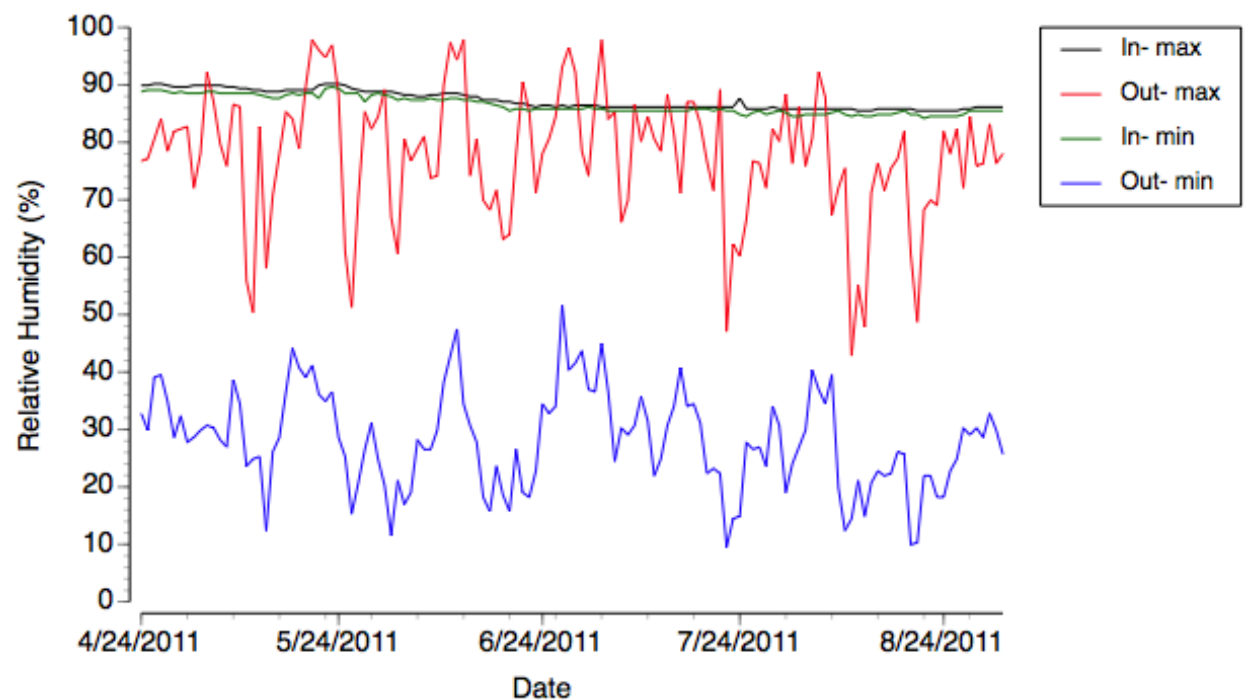


Figure 2: Daily range of relative humidity inside the roosting chamber of Kiwi Cave compared to external humidity variability from April to September.

Lara received first class honours later in the year and is now travelling in the USA



Photo: D. Irvin

Assistant Hunter McCall holding a specimen of *Hipposideros ater*

[New Zealand 2011/2012 Expedition](#)

Text by Paul Osborne

Photos by Paco Murray and Grant Rees

This expedition was conceived following the CCC 2011 NZ trip when we wanted something more substantial in the way of an expedition goal. The caves of Ellis Basin are mostly deep shafts and currently the System is the deepest in the Southern Hemisphere. There is approximately 7km between the furthest explored parts of the cave and the Pearce resurgence where the water flow egresses from the mountain. The expedition goal was to push the known limits of the cave to find further leads towards the resurgence.

Paco became the expedition leader and enlisted Ben McGregor Ramona Gerber and I from CCC, Grant Rees and David Taberner from Hills Spelios in Sydney and Kieran McKay from HTC in NZ. Additionally there were a number of local Nelson cavers

that came and helped out for a few days. Most of us arrived on Boxing Day and the plan to do a warm-up trip through Harwood's was brought forward due to impending weather. Paco ended up doing two through trips on successive days.



The crappy weather arrived on schedule and we used the time to make arrangements for the Helicopter and other transport, food supplies and general expedition supplies. David and Grant had arranged for DHL to deliver all their caving equipment to Nelson. This couldn't be found when they arrived and they spent three panic filled days trying to recover the gear before the expedition started.

Somehow chaos slowly turned to order and the weather cleared sufficiently to get the airlift started. Times were arranged and we left the first load at the heli base and headed across the hills to the bottom of the mountain to meet the chopper for the second and third sorties. Just as we got out of mobile range we encountered a tree across the road. After much deliberation Hoss got hold of a cane knife type of weapon and started into the tree. (Don't ever argue with Hoss) Not long after, we had the road sufficiently cleared for us to drive the convoy under the tree and on to the rendezvous point but not in time to meet the chopper for the second load. We had to wait five hours in the paddock while he attended another job before being airlifted to our destination.

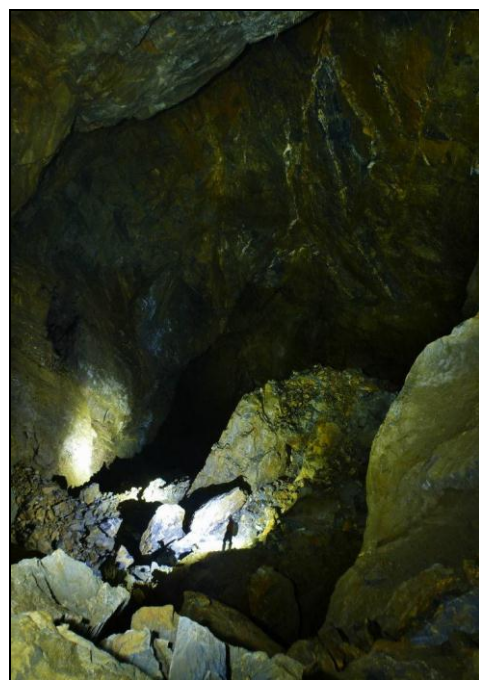
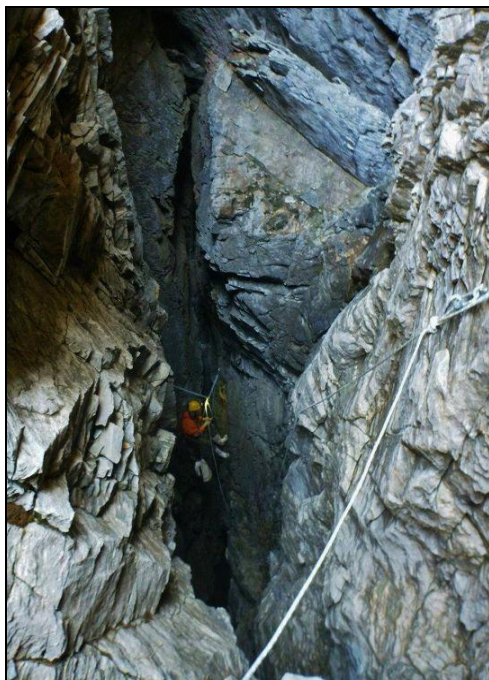


The mountain base was the Ellis Basin Hut which is at about 1110 metres and sleeps 6 people. Most of us elected to sleep in tents and use the hut for storage and communal activities. The camp was pretty comfortable thanks to all the expedition equipment loaned to us by Oz Patterson, Leo and Glenys.

There was a huge amount of gear which included nearly 1KM of rope and over 100 karabiners not to mention food and alcohol for hungry cavers to last for 17 days.

After a couple of days we worked out that a considerable amount of essential ingredients were missing namely all the fridge stuff still safely stored in Glenys and Leo's fridge. We also looked like we'd seriously underestimated the amount of toilet paper we would need and Ramona pointed out that men should never underestimate how much toilet paper women can go through.

Needless to say there were a lot of jokes made about TP rationing and on our first rest day, Hoss offered to point us in the right direction of the Villa Maria expedition base where an amount of stored gear including cheese and toilet paper was rumoured to exist. This seemed to be an easier option than climbing the Twins with the others to 1800m and it was a beautiful day so Ben, Ramona and I trudged off after Hoss who was walking out that day.



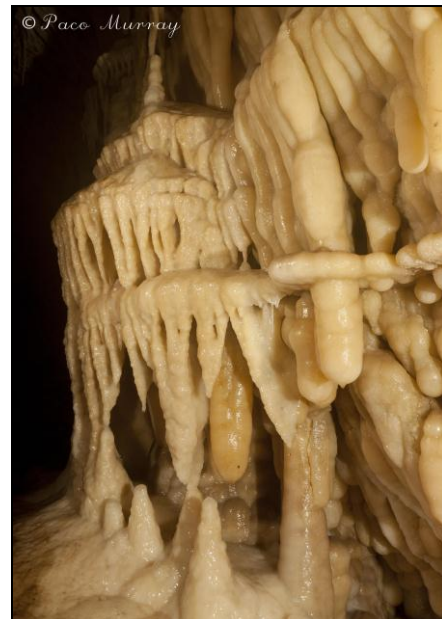
Another serious underestimation was the amount of seriously rugged country we would have to traverse in our efforts to secure further supplies. There are a lot of jokes about Kiwis and sheep but I reckon there has to be some mountain goat in their genealogy as well. By the time we eventually made it back to camp with the aforementioned supplies, we were totally stuffed and the day's expedition was known from then on as the "death march".

I suppose I should mention the caving. The first day following the airlift day, Grant, David and I went off to rig Excalibur and Kieran led the others on a rigging trip to Tomo Thyme.

Excalibur is known as the express route to the bottom and enters the mountain about the halfway point in the 1000+m deep cave system. It comprises an entrance series of quite nice pitches which requires about 320m of continuous rope. Grant had a bit of a slip at about the 230m mark and fortunately landed on the rope bag sustaining only bruising and soreness that slowed him down to my pace.

Not far from the bottom of the entrance series the cave branches out in a myriad of directions, all with lots of marvels to see. The rigging of the rest of the cave down to the sumps took many days more by the time all the touring bits were done and in all I think we had rigged over 500m of rope in Excalibur alone.

Kieran was keen to push a lead he knew of in Black Sheep Highway in Tomo Thyme which was drafting seriously and concentrated his efforts there for the first few days. Others followed leads in other areas of the cave. Kieran was able to widen a hole big enough to get through and eventually found a lot more passage leading to an area on the map with no known cave. Something for next time.



Meanwhile back at the hut some DoC hunters had turned up on a pest eradication program. The first day they bagged a Chamois and proceeded to fry bits of it up outside the hut which had all of us seriously salivating. I mentioned our minor food shortage the next day and Coxy cut off a hind quarter for us which went down extremely well. The next day they bagged a deer and gave us a whole eye fillet which had to be about the best cut of meat I'd ever tasted.

Whenever we were up on top of the mountains we were able to contact the outside world by mobile phone and learnt that Oz and Grant had organised to ferry in some parmesan and salami from the fridge supplies left behind. They arrived and spent a couple of great days recuperating before departing again over the mountains back out.

Back to the caving. There were quite a few side trips and other entrances found and explored and always more to be done and lure us back however time was marching on and plans were made to drain the sumps at the bottom of the cave called the flood zone with siphon tubes and get the dive gear down for Kieran to dive the final sump. Kieran, Paco, David and Grant self-selected for the final sump team. Kieran mentioned that only two cavers had ever been as far as they went. All was ready for the final dive day but alas rain came and Kieran mentioned that it wasn't called the "flood zone" for nothing and that there was a serious risk of becoming trapped below the sumps followed by drowning should the river level rise down there. We were on standby for days spent pushing dryer areas while we watched the river rise and fall and rise again. Eventually it was decided to abort the dive and de-rig the caves as our departure date was upon us. We decided to leave the flood zone rigged and retrieve all else. The fitter members of the team did a sterling job of de-rigging and getting all the rope back to the hut in some quite sloppy conditions.

On departure day, most of the crew walked out leaving Paco and I to tidy the camp and prepare the loading for the helicopter. We had a couple of hours to spare and used it to locate an entrance that had been eluding us for the entire expedition. Too late but gives us something to go back for.



Although we didn't get to realise the main goal of the expedition, the caving was exceptional, several team members reached the -500 level for their first time and they also saw parts of the cave that very few have seen before. Additionally we were able to leave several possibilities for further expeditions and the knowledge and experience base is there for future expeditions.

I was pleased to see I wasn't the only one who was feeling the effects of such demanding caving at the end. The level of fitness and endurance required for such an endeavour should never be underestimated. For us tropical cavers the cold and altitude were also factors that we were unable to be prepare adequately for. Getting back to the luxuries of Nelson and Leo and Glenys' hospitality was awesome.

The local cavers were unbelievable in their hospitality and assistance. They are a fantastic bunch of people and bent over backwards to make our expedition as enjoyable as possible.

We all departed in dribs and drabs from Nelson, Paco and I departed straight from the pub after dinner with 30 or 40 cavers. What a great way to say good-bye to everybody and hop on a late flight to reflect on all that we'd done.



Paco, David, Grant, Ramona, Ben, Kieran, Pip, Paul and Hoss

Exploration and Mapping of CH538

18-19 February 2012

Paul, Douglas, Grant, Deanne and Peter explored and mapped a new cave located in Ryan Imperial Tower by Douglas in 2011. Two days in February were spent slowly surveying the small system (named Column Cave), which everyone concluded no one had visited before. This trip was an attempt to descend a short pitch and continue exploring the system with a small team of surveyors following.

The short walk there is also great, meandering amongst deeps grikes in the Royal Arch Tower. The CH538 entrance is a classic, a small duck under at the end of a deep grike. It was a great opportunity to test out the new disto which Paul had just purchased.

After a false start, (15 min) to survey the entrance grike and surrounds, the survey team finally entered the cave while Paul and Douglas rigged a pitch and proceeded to explore the cave. It as slow going and explorers Paul and Douglas waited and waited for the surveyors to catch up. The first pitch is very short but descends to a well decorated area with high vaulted ceilings. Great care was taken to prevent damage to some fragile wall formation and the floor of the cave which contained some unique cave animals.

Surprisingly, an excellent lead required further rigging to descend another short pitch. This was found to drop into the main passage of CH34 (Naradahn Cave), which contains a long narrow squeeze leading out to the tagged entrance. By the time the survey team got near the connection the day was almost up.



Deanne at the entrance rift



Grant above a small pitch

The second day was taken up filling in the detail of a few small branches, one lead to a deep pit (8m) with water at the base and another to a small delicate decorated chamber. The mapping team then moved on to survey the link into CH34 and after avoiding the squeeze, surveyed in the opposite direction to eventually lead out into a major doline entrance. While having lunch Peter and Douglas recognised having explored the doline before and after a little while the tag CH32 was found. The team then moved onto map the main passage of CH32, a straight narrow rift, which lead via a steep 6m climb to a deep sump section with no further leads. The side-walls of the main rift passage in CH32 were very interesting in that they were covered in horizontal calcite stripes (approx. 5cm apart). It looked like they were generated by last years receding floodwaters. If the deposits were generated by floodwaters, it would indicated that the whole doline (from which these two caves lead), was completely under water last year. It would be worthwhile surveying the highest stripe to see if it is level with the surrounding plain, the maximum level reached by last years water level.

Peter (between cave sketching) tested out a new snappy camera. The cave insects taken below (on macro) are between 10- 5mm in size and are still a bit fuzzy (not a crisp image). It is good to capture some of these creatures so people can become more aware of them when they go caving. Another day is still required to survey a daylight rift which will complete a map of the three caves.

Some cave life.....



Terrestrial Isopod



Plant Hopper

MEMBERSHIP LIST 2011/2012

Executive		Region	Year joined
Paul Osborne	(President)	El Arish	1996
Mary Ann Irvin	(Secretary)	Sydney (NSW)	1979
Peter Bannink	(Treasurer)	Mareeba	2000

Club Members (non caving)

Cheryl Belbin	Flying Fish Point	2007
Les Pearson	Brinsmead	1973
Beth Pearson	Brinsmead	1991
Miriam Robertson	Cairns	1975

Club Members (caving)

Berend Akkerman	Kuranda	2011
Jamie Baker	White Rock	2010
Belinda Bannink	Mareeba	2011
Axil Buthmann	Kuranda	2004
Van Christensen	Tandara	2003
Alan Cummins	Gordonvale	1973
Margaret Cummins	Gordonvale	1973
Catherine Cummins	Gordonvale	1995
Peter Cummins	Atherton	1983
Michael Cummins		1983
Max Emney	Silkwood	2002
Tim Forsyth	Tolga	2011
Diane Forsyth	Tolga	2011
Flynn Forsyth	Tolga	2011
Tia Forsyth	Tolga	2011
Horrie Garth	Cairns	1975
Greg Gurnier	Gordonvale	1997
Doris Gurnier	Gordonvale	2007

Joshua Gurnier	Gordonvale	2007
Lauren Gurnier	Gordonvale	2007
Tim Gurnier	Gordonvale	2007
Robert Ham	Bayview	1988
Phil Harrison	Cairns	2007
Chris Head	Flying Fish Point	2007
Douglas Irvin	Sydney (NSW)	1979
Sue Jenkins	Silkwood	1992
Wendy Lander	Yungaburra	1983
Daniel Mitchell	Mareeba	2000
Elwing Mitchell	Mareeba	2005
Steven Morgan	Mackay	2007
Kerry Morgan	Mackay	2007
Philp Morgan	Mackay	2007
Joanna Morgan	Mackay	2007
Paco Murray	Townsville	2007
Judy Nickles	Edge Hill	1991
Keith Offer	Malanda	1975
Grant Polomka	Tully	2001
Margarite Ryle	Malanda	2008
Mike Tarburton	Blackburn South (Vic)	2011
Deanne Vale	Tully	2001
Michael Waldron	Australia Fair	2010
Winfried Weiss	Tolga	1993
Barry Wright	Bayview Heights	1975

Introductory Members (caving)

Dave Wilesmith		2011
Gary Morris		2011
Anthony Hawwa		2011
Suzanne Livitt		2011
Kris Lambert	Sarina	2011
Damien Tapp	Rural View	2011
Cathy Draheim	Bankstown (NSW)	2011
Emil Silvestru	Chilliwack (Canada)	2011
Floare Silvestru	Chilliwack (Canada)	2011
Penny Osborne	Freshwater (NSW)	2011
Anna-Eugenia Binni	East Ryde (NSW)	2011
Jonathan Cramb	Kallangur	2009
Gilbert Price	St Lucia (Brisbane)	2009
Kimberlee Bernays	Kairi	2011
Russel Holsworth		2011
Ben McGregor		2011
Jonathon Ham	Bayview	2011
Terry Matts	Bankstown (NSW)	2011
Amanda Gonzo	Brinsmead	2011
Gus Gonzo	Brinsmead	2011
Michele Viglione	Brinsmead	2011
Joy Burton	Edge Hill	2011
Anika Martin	Belgium	2011
Cassandra King	Malanda	2011
Ramona Gerber		2011 (Student)
Eillen Eastaugh	Douglas	2011 (Student)

Introductory Members (non caving)

Shirley Tarburton	Blackburn South (Vic)	2011
Lara Upton	Smithfield	2011 (Student)
Hunter McCall	Smithfield	2011

Clubhouse Protocol

1. Members have access to the Club area on the ground floor of Clubhouse building. The upstairs back residence, together with the garage and laundry area on the town side of the Club area and the adjacent yard area, are for the private use of the Caretaker.
2. The Caretaker has a lease on his part of the property and the Club has only the limited access allowed under the Residential Tenancies Act. Therefore, Members should contact the Caretaker upon arrival and before departure, but otherwise, enter the private area only on the invitation of the Caretaker.
3. Members, when intending to stay at the Clubhouse, should have the courtesy to telephone the Caretaker to advise him in advance. If the Caretaker is absent, a suitable message should be left on his telephone message bank.
4. Members, when in Chillagoe, may use the Clubhouse facilities, even if not staying at the Clubhouse. However, it is courtesy to tell the Caretaker before using the facilities.

5. Mutual courtesy between Members (and their guests) and the Caretaker is to be expected at all times.

6. Responsibilities of Caretaker are to:

- (a) Maintain grounds in tidy and safe condition and do any minor maintenance to buildings etc.
- (b) Keep Clubhouse clean when not in use by Members
- (c) Maintain supply of toilet paper, cleaning supplies and cleaning equipment for use by Members
- (d) Keep refrigerator and freezer ready for use by Members
- (e) Ensure security is maintained for lights, tackle and other Club property
- (f) Ensure trip book is accessible and, as much as practical, monitor trip book, particularly for the safe return of caving parties.
- (g) Collect Camping and Tackle fees on behalf of Treasurer
- (h) Report to Club Executive any problems he encounters with Clubhouse, Members or guests

7. Responsibilities of Members are to:

- (a) Keep Clubhouse and the outdoor toilet and shower block clean and tidy, while in residence. Cleanliness should be checked to be satisfactory before leaving.
- (b) Avoid use of the toilet and shower inside the Clubhouse as we have soakage pit problems which show up after there is much use of these
- (c) Park cars in an orderly fashion at the allocated parking area and keep vehicle speed down to walking pace to minimize hazard and dust.
- (d) Report to Caretaker any deficiencies in cleaning supplies, equipment etc.
- (e) Use trip book if caving
- (f) Dispose of food scraps and rubbish at the Chillagoe tip on a regular basis and when leaving
- (g) Camping inside the Clubhouse should be avoided except in emergencies (i.e. if drenched in heavy storm)

(h) If using Clubhouse at night, keep noise down, particularly after 10pm.

- (i) Behave in the town and at the Clubhouse in such a way that the Club's reputation is enhanced and not diminished.
- (j) Report to Executive any problems encountered in using the Clubhouse and make suggestions where improvements are needed.

Authorized by Committee of Management 7th June 2000.



Decoration in Column Cave CH538

© G. Anderson